



4.5D/4.5E/4.5R Dimensions

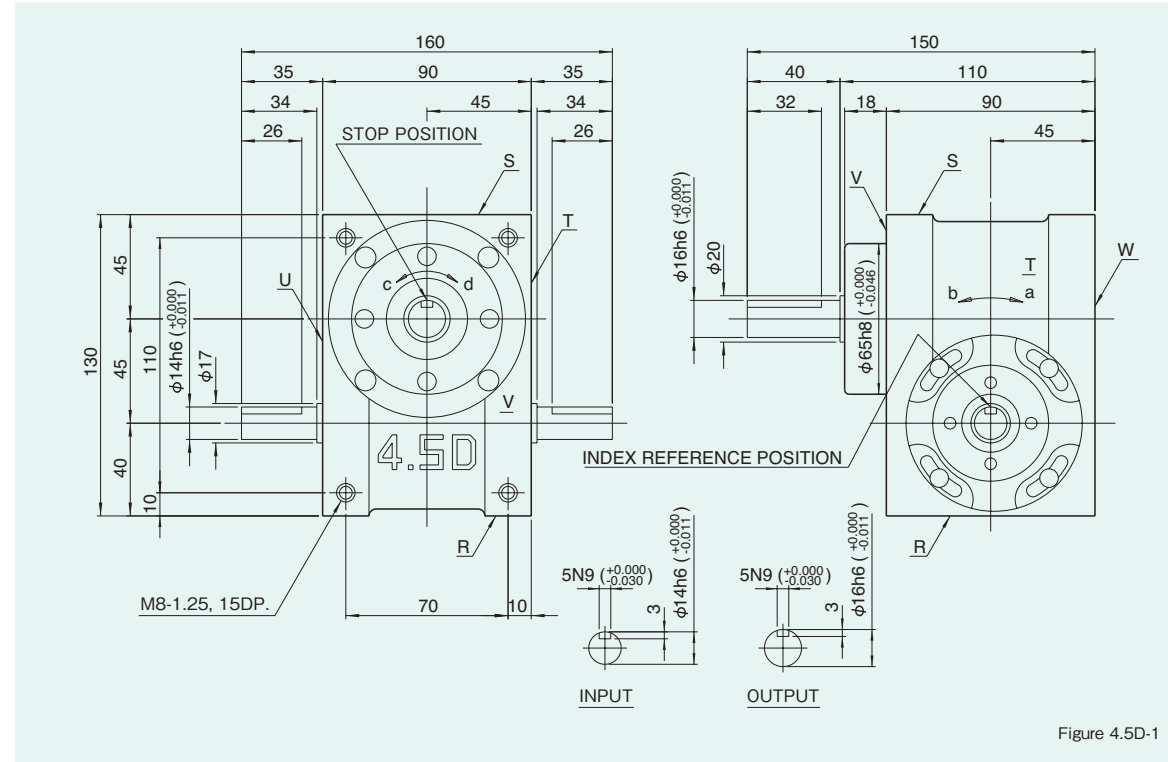
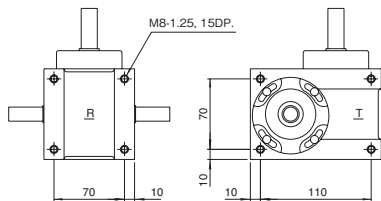


Figure 4.5D-1

Mounting hole locations Figure 4.5D-2



Dimension R,S,T, and U surface

Specifications

Table 4.5D-1

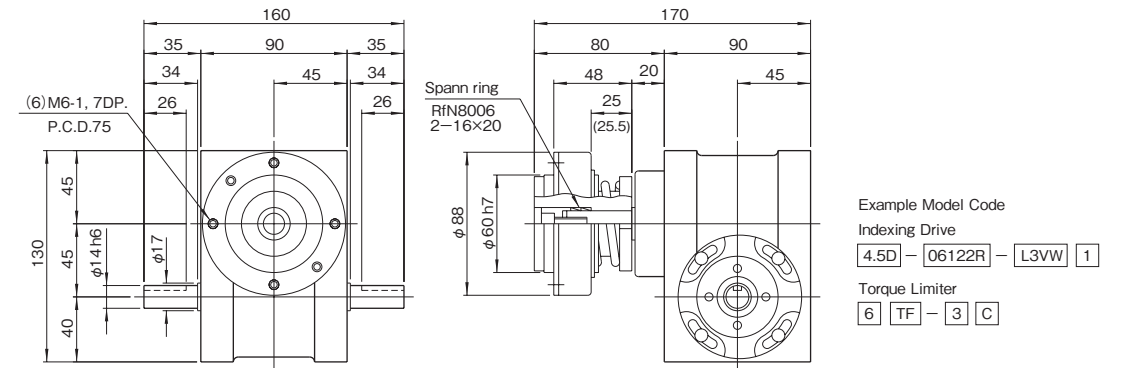
Item	Symbol	Unit	Value	Item	Symbol	Unit	Value	Item	Symbol	Unit	Value
Output allowable axial load	P <sub>1</sub>	N	784	Input allowable axial load	P <sub>4</sub>	N	833	Indexing accuracy (1 DWELL)		sec	±60
Output allowable radial load	P <sub>2</sub>	N	711	Input maximum repetitious bending force	P <sub>5</sub>	N	735	Indexing accuracy (2 DWELL)		sec	±120
Output static torque	T <sub>s</sub>	N·m	Refer to Torque Capacity Table	Input maximum repetitious allowable torque	P <sub>6</sub>	N·m	39.2	Indexing accuracy (3 DWELL)		sec	±180
Output torsional rigidity	K <sub>1</sub>	N·m/rad	6.08×10 <sup>3</sup>	Input torsional rigidity	K <sub>2</sub>	N·m/rad	2.74×10 <sup>3</sup>	Indexing accuracy (4 DWELL)		sec	±240
Output inertia	J <sub>0</sub>	kg·m <sup>2</sup>	1.5×10 <sup>-4</sup>	Input inertia	J <sub>1</sub>	kg·m <sup>2</sup>	8.0×10 <sup>-5</sup>	Repetitive accuracy		sec	30
Output allowable bending moment	P <sub>3</sub>	N·m	24.5					Product weight		kg	6
								Housing color			Gray

Note : Input inertia : J is calculated in dwell.

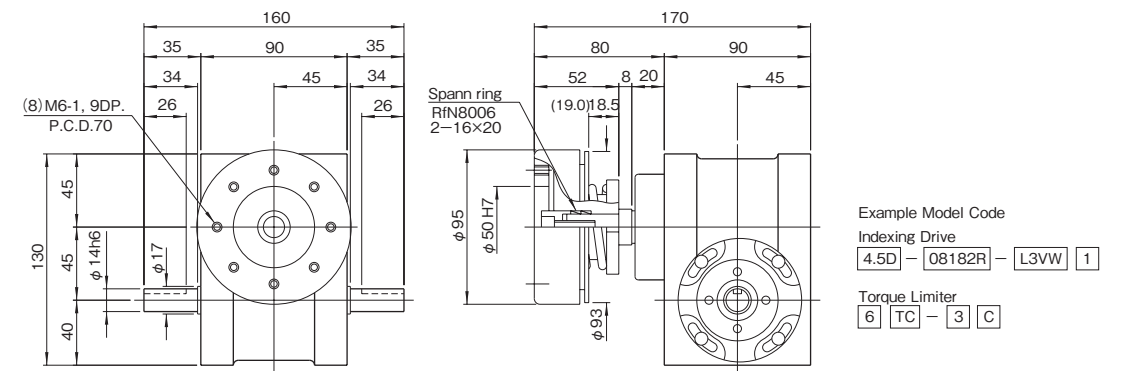
(1N=0.102kgf)

Mounted accessories

4.5D (a)



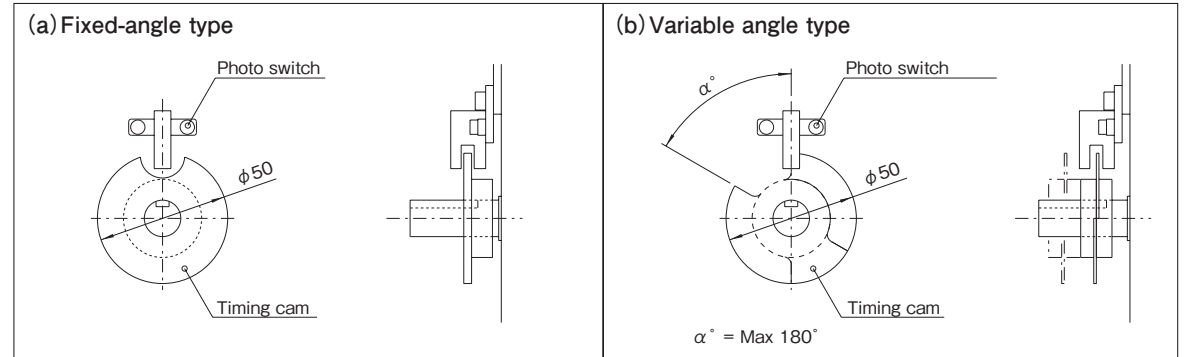
4.5D (b)



Precautions

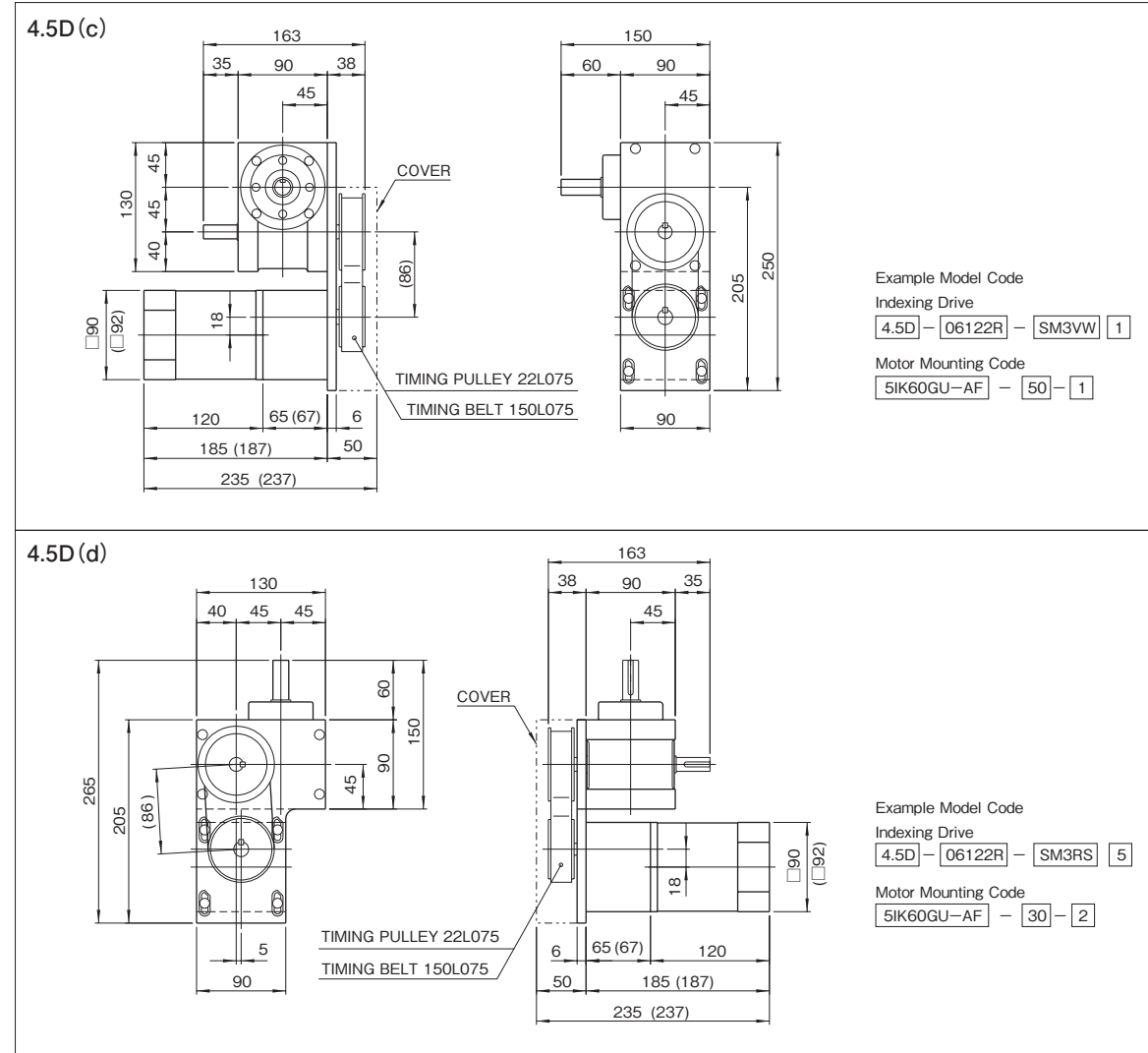
- Models 4.5D,4.5E and 4.5R can be equipped with Torque limiters 6TF and 6TC.
- Torque limiter TC-type require a collar for mounting.

Timing cam-Photo switch

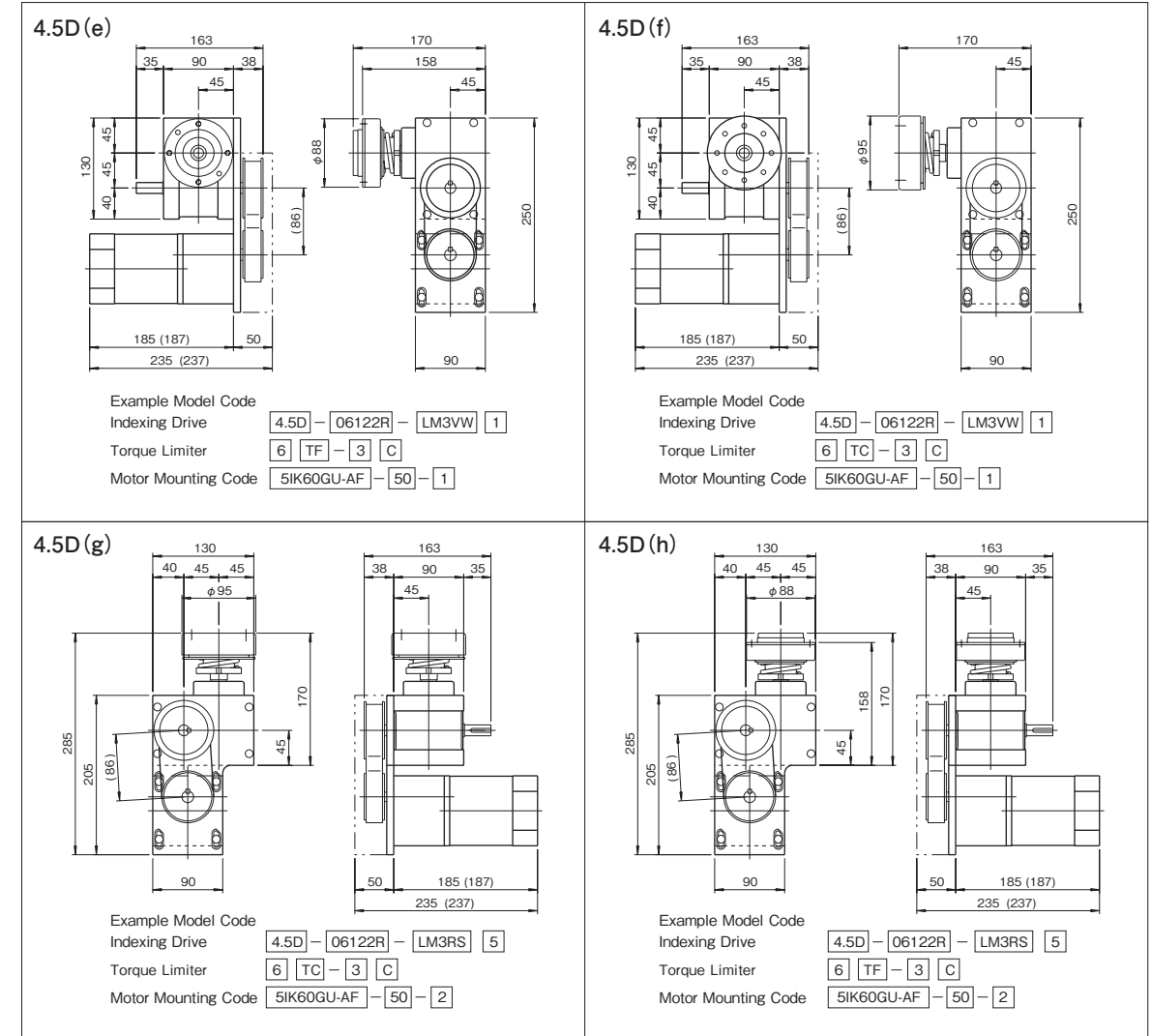


※Up to 3 sets of timing cams and photo switches can be added as necessary.

Mounted accessories



Mounted accessories



Induction motor specifications

Table 4.5D-2

Motor model	Output power (W)	Frequency (Hz)	Voltage (V)	Current (A)	Starting torque (N·m)	Rated torque (N·m)	Rotating speed (rpm)	Capacitor (μ F)	Gear head model	
									5GU□KB	M9GD□B
Oriental Motor 5IK60GU-AF	60	50 60	100	1.4	0.32 0.30	0.45 0.38	1300 1550	15.0	5GU□KB	M9GD□B
Panasonic M9IC60G4L	60	50 60	100	1.3 1.2	0.441	0.451 0.363	1275 1575	15.0	M9GD□B	

Allowable torque with gear head (N·m)

Table 4.5D-3

Rotating speed (rpm)	200	120	100	60	50	30	20	15	10
50Hz Gear ratio	7.5	12.5	15	25	30	50	75	100	150
60Hz Gear ratio	9	15	18	30	36	60	90	120	180
Allowable torque(N·m)	5IK60GU-AF	2.7	4.1	4.9	7.4	8.9	14.9	19.9	20
	M9IC60G4L	2.35	3.92	4.70	7.55	9.11	15.19	19.60	19.60

(1N·m=0.102kgf·m)

Precautions

- The mounting base of the motor mounts on the sides T or U of the indexing drive as shown in Figure 4.5D-(c),(d).
- Figure 4.5D-(c),(d) shows the opposite of when mounted on side U.
- Dimensions in parenthesis Panasonic motor.
- When ordering, always specify the gear reduction ratio along with the indexing drive code number.
- Note:For details on the induction motor, refer to the brochure for Oriental Motors(or Panasonic).

## 6D/6E/6R Dimensions

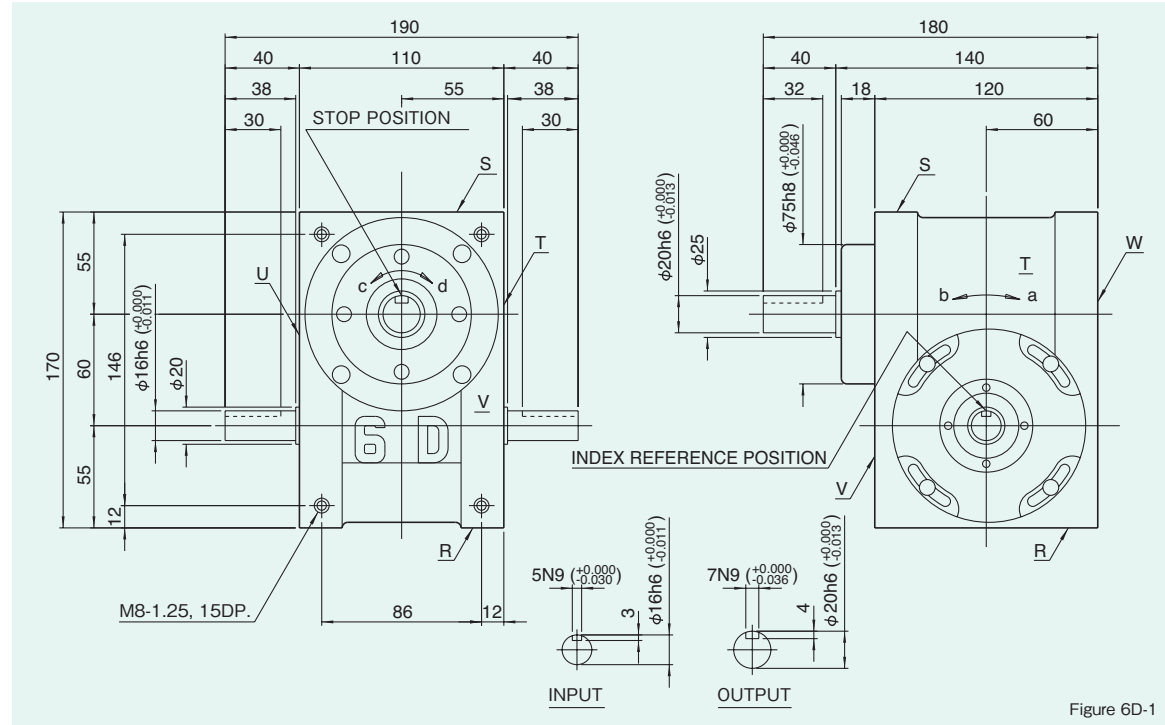
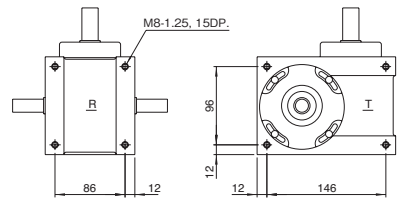


Figure 6D-1

### Mounting hole locations

Figure 6D-2



Dimension R,S,T, and U surface

### Locations of oil plug, etc., and oil capacity

Figure 6D-3

Mounting position	1	2	3	4	5	6
Location						
Oil capacity (ℓ)	0.5	0.37	0.35	0.35	0.3	0.3

### Precautions

- Each point indicated in the mounting positions shown in Figure 6D-3 represents (starting at top) the oil plug (PT3/8), oil level (VA-01), and drain (PT1/4).
- The mounting positions correspond to code i for the indexing, oscillating, and rotary drives.
- The oil levels indicated in Figure 6D-3 are given in general figures and will differ according to the profile of the cam and the number of cam followers.

### Specifications

Table 6D-1

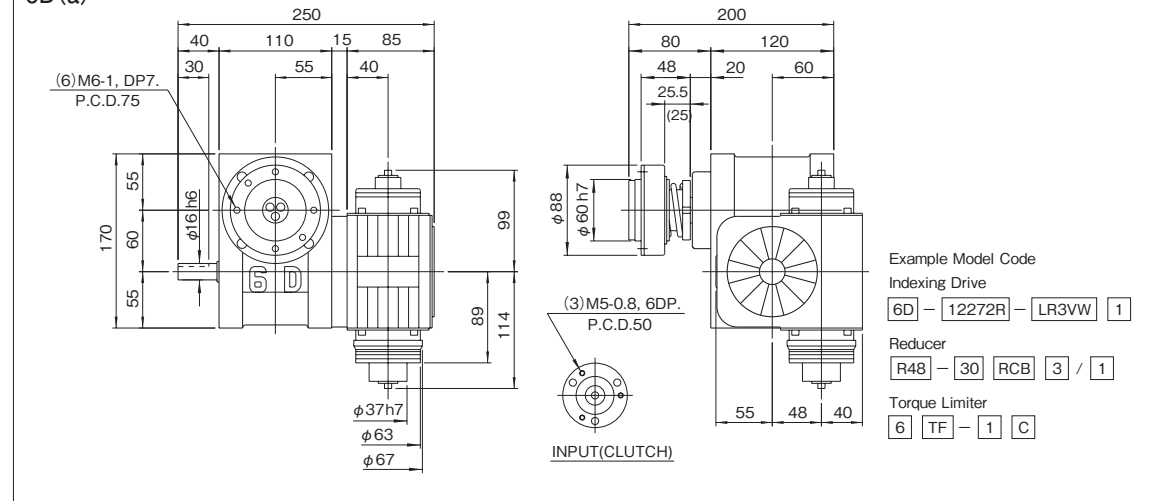
Item	Symbol	Unit	Value	Item	Symbol	Unit	Value	Item	Symbol	Unit	Value
Output allowable axial load	P <sub>1</sub>	N	1764	Input allowable axial load	P <sub>4</sub>	N	980	Indexing accuracy (1 DWELL)		sec	±45
Output allowable radial load	P <sub>2</sub>	N	1470	Input maximum repetitive bending force	P <sub>5</sub>	N	931	Indexing accuracy (2 DWELL)		sec	±90
Output static torque	T <sub>s</sub>	N·m	Refer to Torque Capacity Table	Input maximum repetitive allowable torque	P <sub>6</sub>	N·m	58.8	Indexing accuracy (3 DWELL)		sec	±135
Output torsional rigidity	K <sub>1</sub>	N·m/rad	1.37×10 <sup>4</sup>	Input torsional rigidity	K <sub>2</sub>	N·m/rad	4.12×10 <sup>3</sup>	Indexing accuracy (4 DWELL)		sec	±180
Output inertia	J <sub>0</sub>	kg·m <sup>2</sup>	3.4×10 <sup>-4</sup>	Input inertia	J <sub>1</sub>	kg·m <sup>2</sup>	4.75×10 <sup>-4</sup>	Repetitive accuracy		sec	20
Output allowable bending moment	P <sub>3</sub>	N·m	34.3					Product weight		kg	10
								Housing color			Gray

Note : Input inertia : J is calculated in dwell.

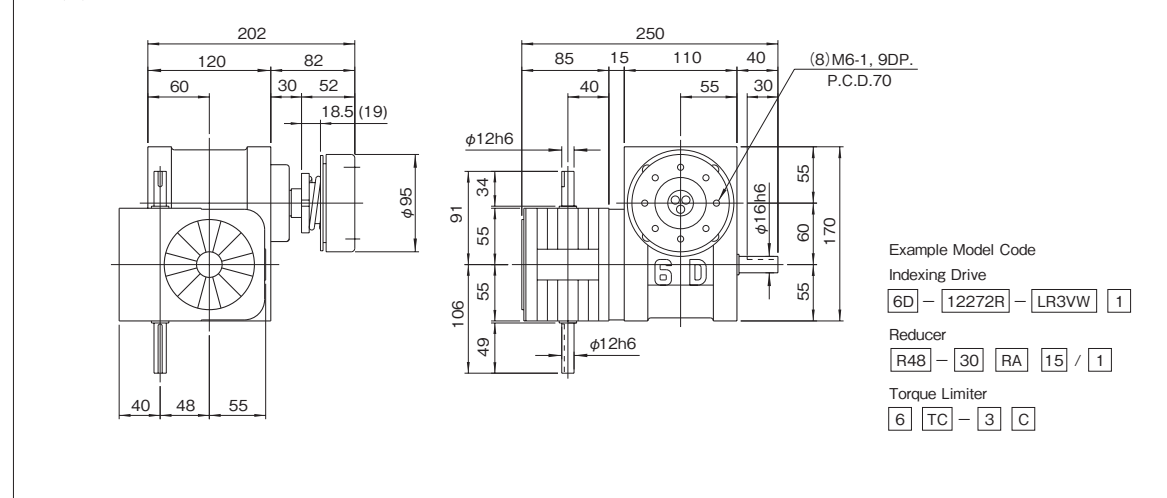
(1N=0.102kgf)

## Mounted accessories

### 6D(a)



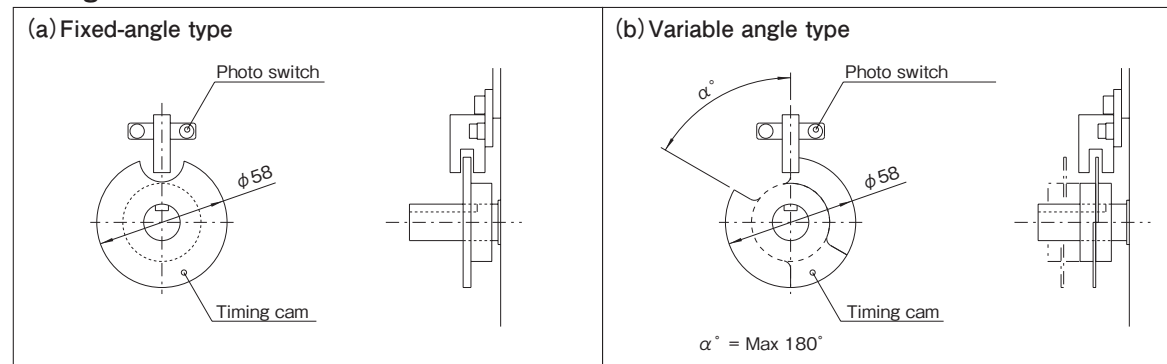
### 6D(b)



### Precautions

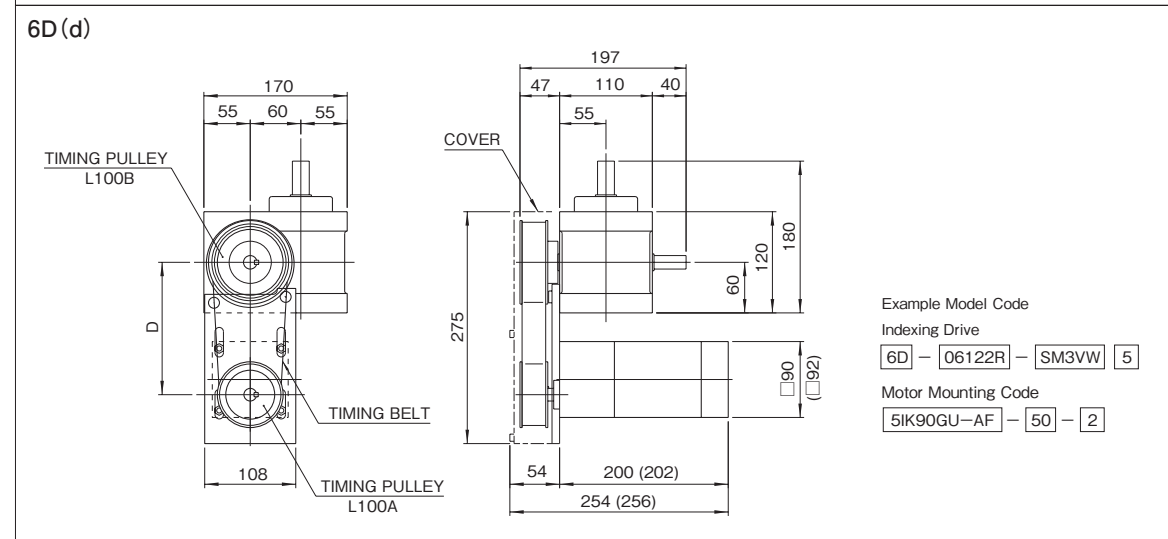
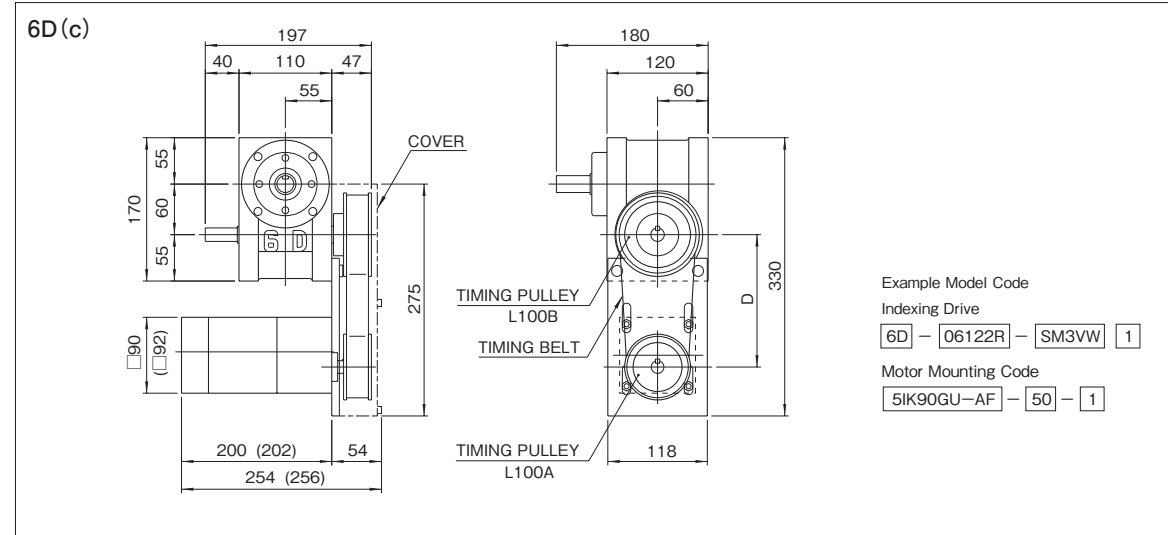
- Models 6D, 6E and 6R can be equipped with reducer R48.
- Models 6D, 6E, and 6R can be equipped with torque limiters 6TF and 6TC. Torque limiter TC-type require a collar for mounting.

### Timing cam-Photo switch

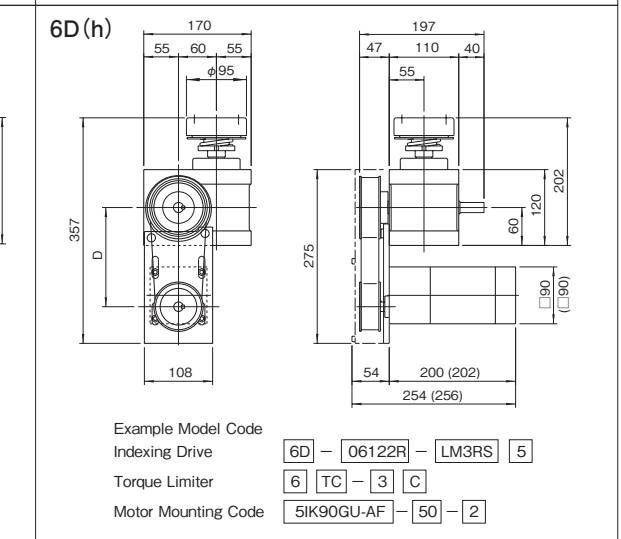
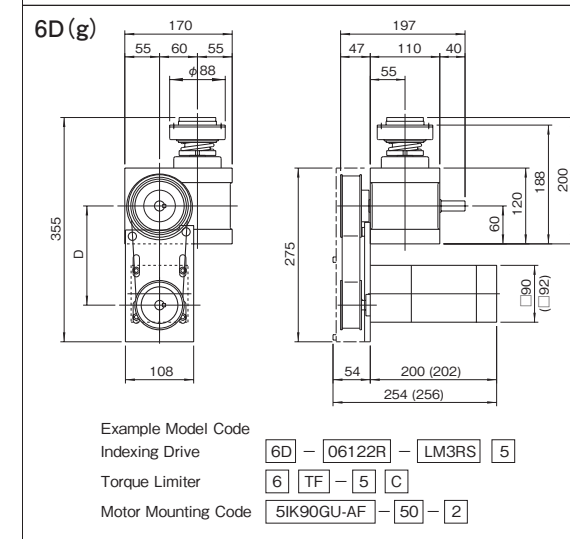
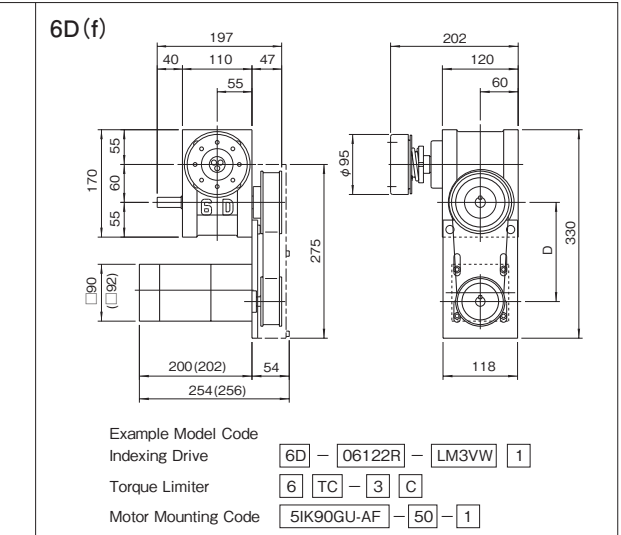
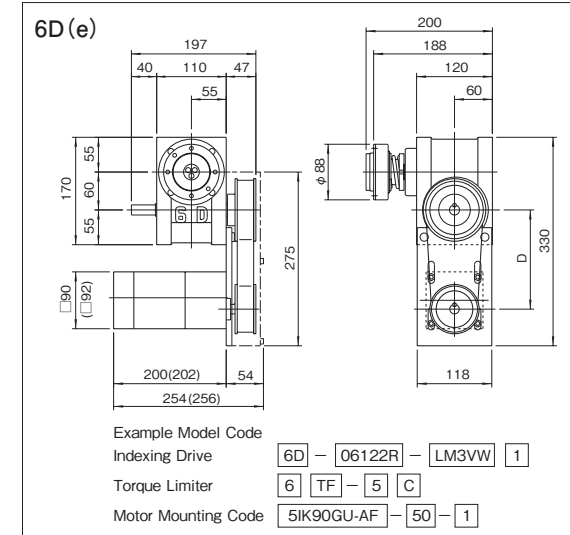


※Up to 3 sets of timing cams and photo switches can be added as necessary.

Mounted accessories



Mounted accessories



Induction motor specifications

Table 6D-2

Maker	Motor model	Output power (W)	Frequency (Hz)	Voltage (V)	Current (A)	Starting torque (N·m)	Rated torque (N·m)	Rotating speed (rpm)	Capacitor (μ F)	Gear head model	
										5GU□KB	Ball bearing type
Oriental motor	5IK90GU-AF	90	50 60	100	2.0	0.45	0.68 0.57	1300 1550	25.0	5GU□KB	
Panasonic	M9IC90G4L	90	50 60	100	1.6 1.7	0.470	0.637 0.519	1325 1625	25.0	M9GD□B	

Allowable torque with gear head

Table 6D-3

Rotating speed (rpm)	200	120	100	60	50	30	20	15	10
50Hz Gear ratio	7.5	12.5	15	25	30	50	75	100	150
60Hz Gear ratio	9	15	18	30	36	60	90	120	180
Allowable torque(N·m)	5IK90GU-AF	4.1	6.2	7.4	11.2	13.5	20	20	20
	M9IC90G4L	3.43	5.68	6.76	10.88	13.03	19.60	19.60	19.60

(1N·m=0.102kgf·m)

Timing transmission specifications

Table 6D-4

Timing pulley reduction ratio	Pulley A Number of teeth	Pulley B Number of teeth	D	Belt Number
1.5	20	30	146.8	210L teeth

※Pulley gear ratio is 1.5. Make note of this when selecting gear ratios for the gear head.

Precautions

- The mounting base of the motor mounts on the sides T or U of the indexing drive as shown in Figure 6D-(c),(d).
- Figure 6D-(c),(d) shows the opposite of when mounted on side U.
- Dimensions in parenthesis indicate Panasonic motor.
- When ordering, always specify the gear reduction ratio along with the indexing drive code number.
- Note:For details on the induction motor, refer to the brochure for Oriental Motors (or Panasonic).

## 7D/7E/7R Dimensions

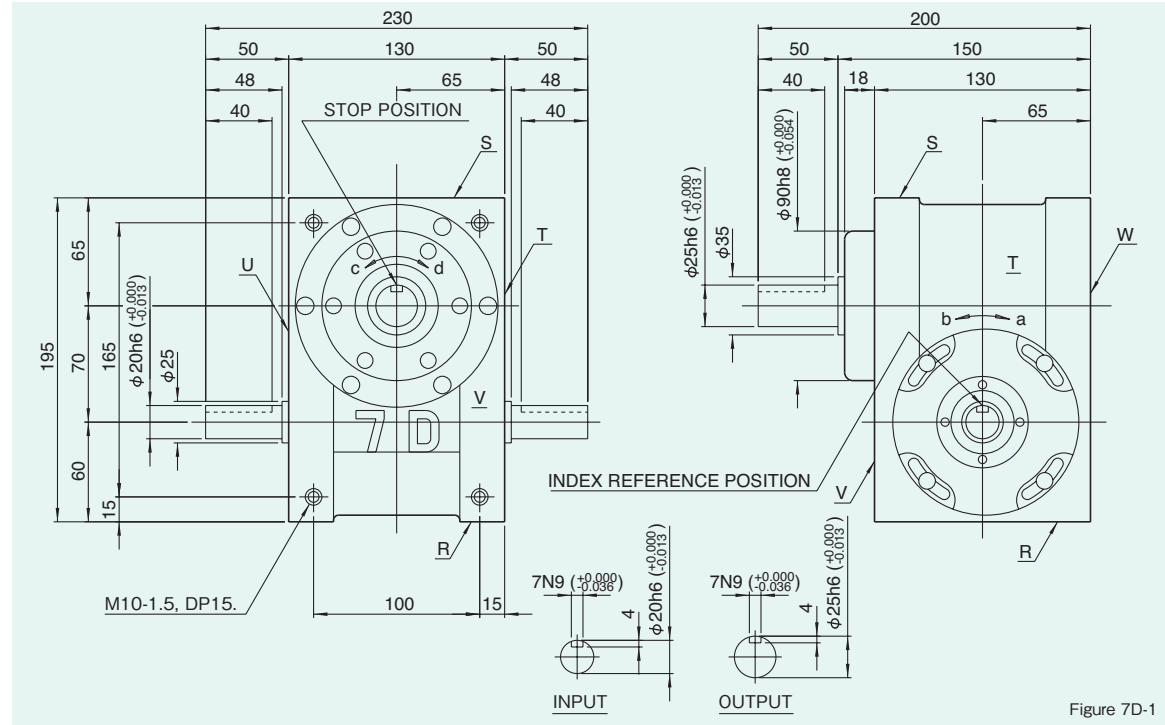
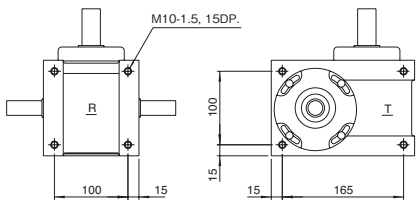


Figure 7D-1

7D

### Mounting hole locations

Figure 7D-2



Dimension of R, S, T, and U surface

### Locations of oil plug, etc., and oil capacity

Figure 7D-3

Mounting position	1	2	3	4	5	6
Location						
Oil capacity (ℓ)	0.6	0.6	0.55	0.55	0.4	0.4

### Precautions

- Each point indicated in the mounting positions shown in Figure 7D-3 represents (starting at top) the oil plug (PT3/8), oil level (VA-01), and drain (PT1/4).
- The mounting positions correspond to code i for the indexing, oscillating, and rotary drives.
- The oil levels indicated in Figure 7D-3 are given in general figures and will differ according to the profile of the cam and the number of cam followers.

### Specifications

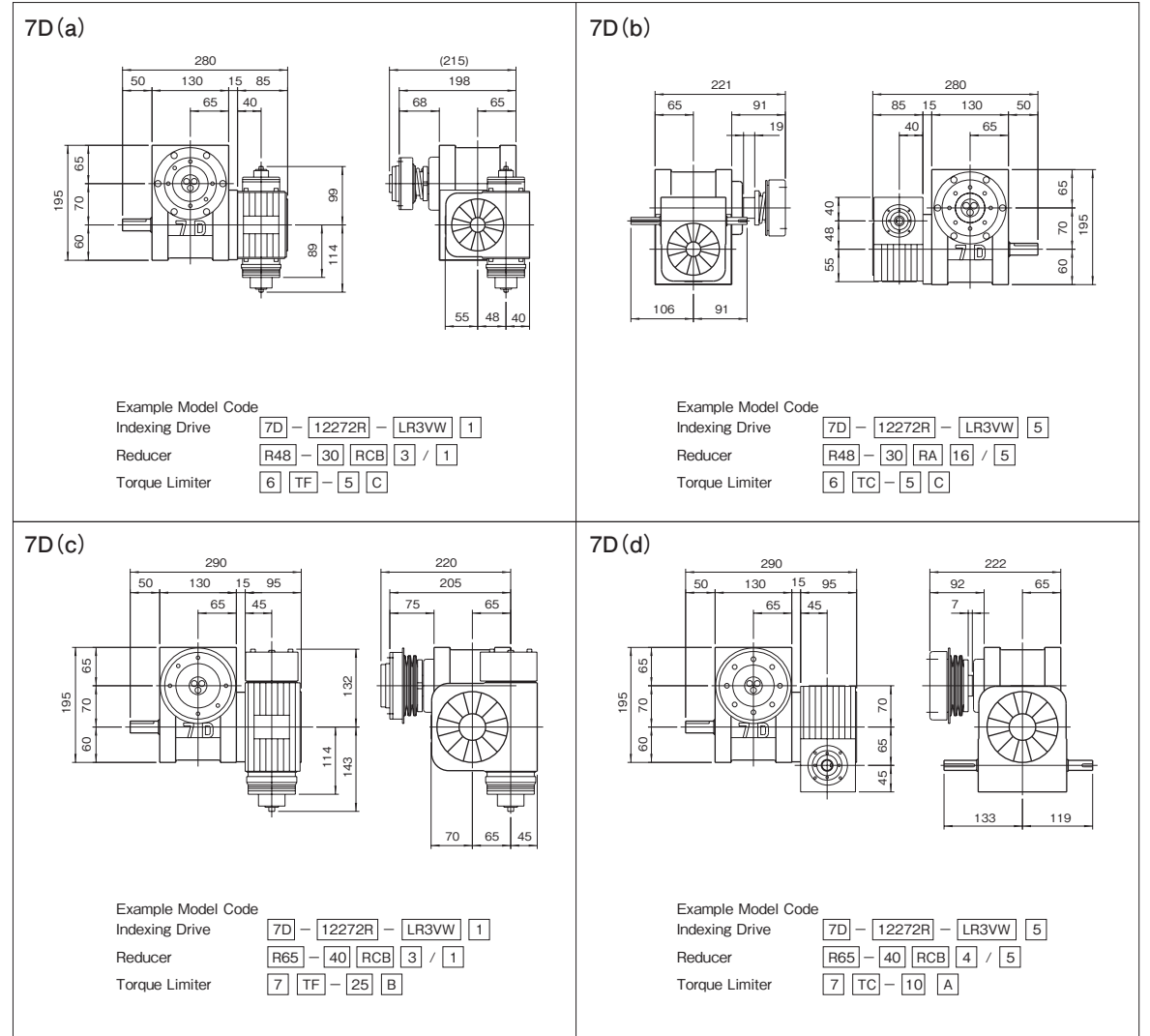
Table 7D-1

Item	Symbol	Unit	Value	Item	Symbol	Unit	Value	Item	Symbol	Unit	Value
Output allowable axial load	P <sub>1</sub>	N	2156	Input allowable axial load	P <sub>4</sub>	N	1470	Indexing accuracy (1 DWELL)		sec	±30
Output allowable radial load	P <sub>2</sub>	N	2156	Input maximum repetitious bending force	P <sub>5</sub>	N	1078	Indexing accuracy (2 DWELL)		sec	±60
Output static torque	T <sub>s</sub>	N·m	Refer to Torque Capacity Table	Input maximum repetitious allowable torque	P <sub>6</sub>	N·m	93.1	Indexing accuracy (3 DWELL)		sec	±90
Output torsional rigidity	K <sub>1</sub>	N·m/rad	2.84×10 <sup>4</sup>	Input torsional rigidity	K <sub>2</sub>	N·m/rad	8.43×10 <sup>3</sup>	Indexing accuracy (4 DWELL)		sec	±120
Output inertia	J <sub>0</sub>	kg·m <sup>2</sup>	1.05×10 <sup>-3</sup>	Input inertia	J <sub>1</sub>	kg·m <sup>2</sup>	1.5×10 <sup>-3</sup>	Repetitive accuracy		sec	15
Output allowable bending moment	P <sub>3</sub>	N·m	63.7					Product weight		kg	16
								Housing color		Gray	

Note : Input inertia : J is calculated in dwell.

(1N=0.102kgf)

## Mounted accessories



### Precautions

- Models 7D, 7E, and 7R can be equipped with reducers R48 and R65.
- The reducer can be mounted in 16 different positions as shown on page of Reducer.
- Models 7D, 7E, and 7R can be equipped with torque limiters 6TF, 7TF, 6TC and 7TC.
- Torque limiter TC-types require a collar for mounting. Reducers require a collar for mounting.

7D



8D/8E/8R Dimensions

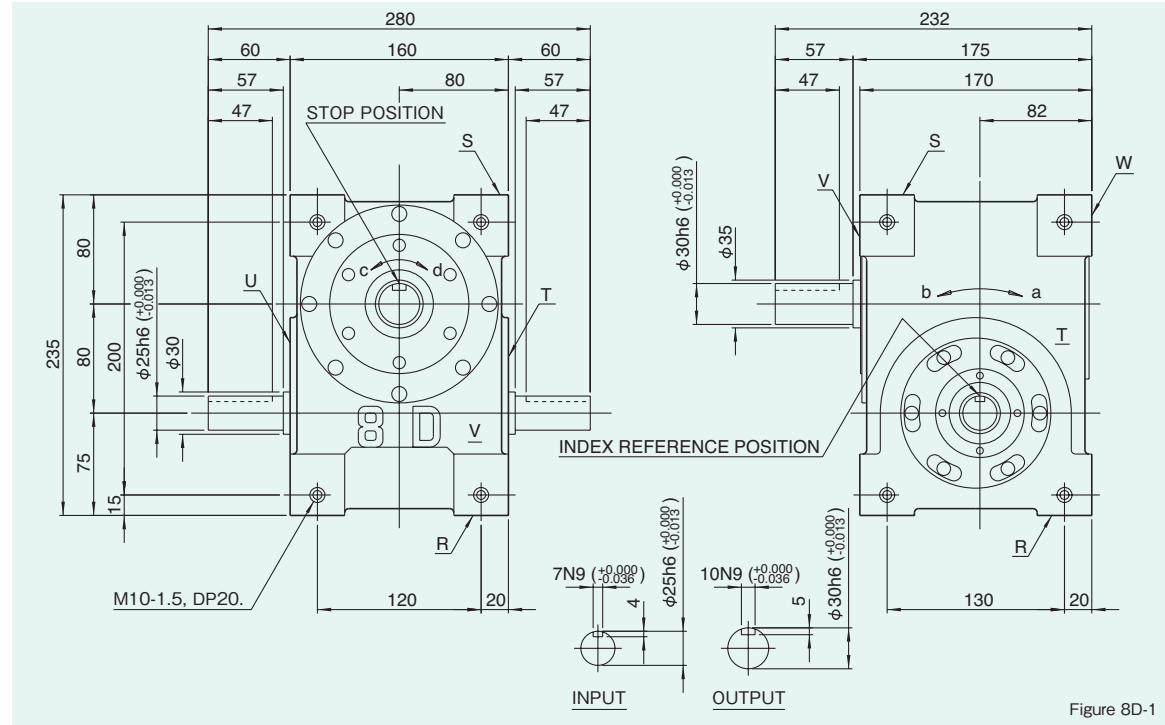


Figure 8D-1

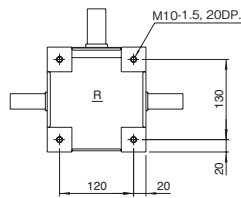
Locations of oil plug, etc., and oil capacity

Figure 8D-3

Mounting position	1	2	3	4	5	6
Location						
Oil capacity (ℓ)	1.2	0.8	1.4	1.2	0.7	1.4

Mounting hole locations

Figure 8D-2



Dimension of R and S surface

Precautions

- Each point indicated in the mounting positions shown in Figure 8D-3 represents (starting at top) the oil plug (PT1/2), oil level (VA-01), and drain (PT1/2).
- The mounting positions correspond to code i for the indexing, oscillating, and rotary drives.
- The oil levels indicated in Figure 8D-3 are given in general figures and will differ according to the profile of the cam and the number of cam followers.

Specifications

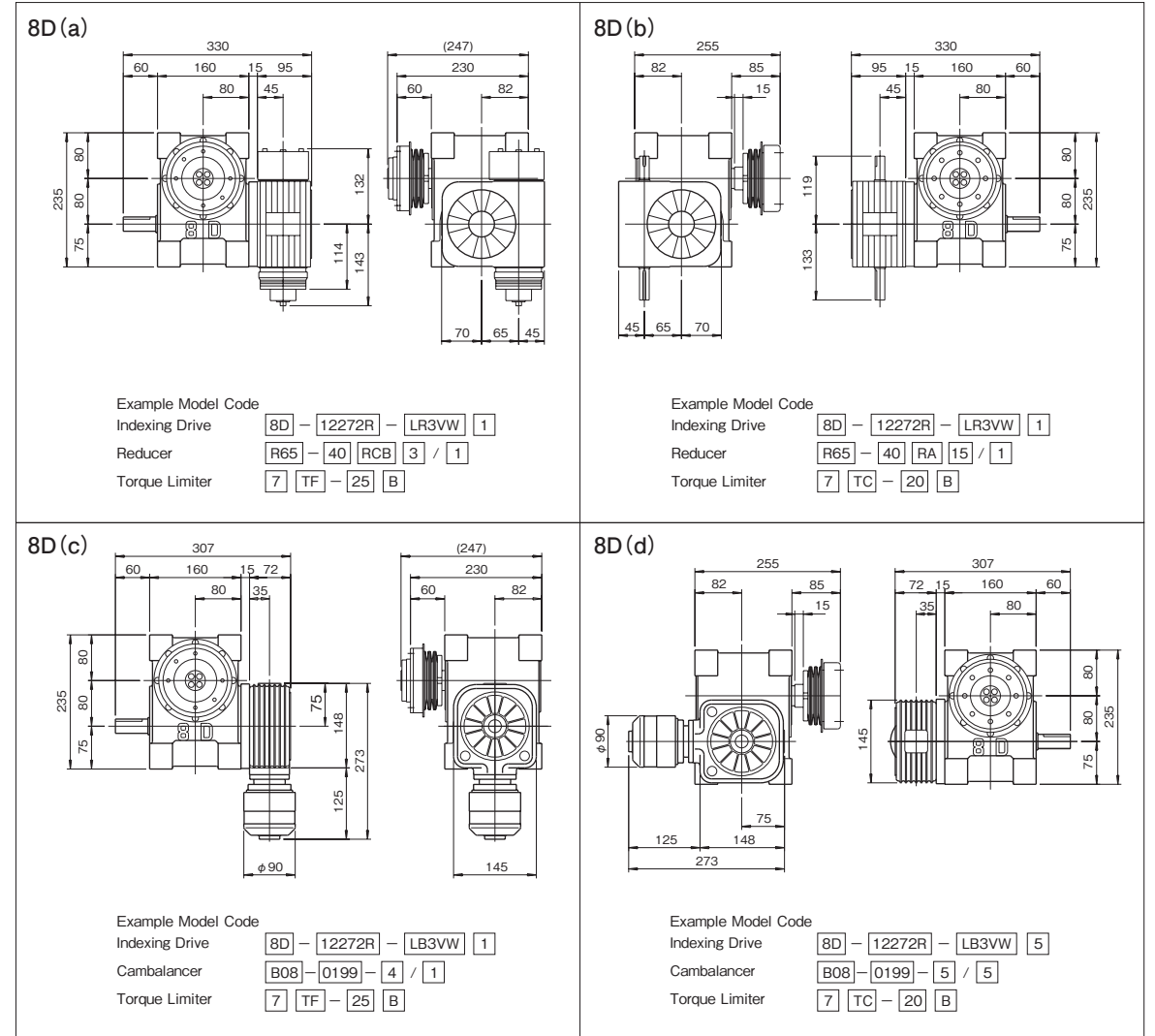
Table 8D-1

Item	Symbol	Unit	Value	Item	Symbol	Unit	Value	Item	Symbol	Unit	Value
Output allowable axial load	P <sub>1</sub>	N	2156	Input allowable axial load	P <sub>4</sub>	N	2058	Indexing accuracy (1 DWELL)		sec	±30
Output allowable radial load	P <sub>2</sub>	N	2156	Input maximum repetitious bending force	P <sub>5</sub>	N	1862	Indexing accuracy (2 DWELL)		sec	±60
Output static torque	T <sub>s</sub>	N·m	Refer to Torque Capacity Table	Input maximum repetitious allowable torque	P <sub>6</sub>	N·m	181.3	Indexing accuracy (3 DWELL)		sec	±90
Output torsional rigidity	K <sub>1</sub>	N·m/rad	5.29×10 <sup>4</sup>	Input torsional rigidity	K <sub>2</sub>	N·m/rad	1.67×10 <sup>4</sup>	Indexing accuracy (4 DWELL)		sec	±120
Output inertia	J <sub>0</sub>	kg·m <sup>2</sup>	1.79×10 <sup>-3</sup>	Input inertia	J <sub>1</sub>	kg·m <sup>2</sup>	2.25×10 <sup>-3</sup>	Repetitive accuracy		sec	15
Output allowable bending moment	P <sub>3</sub>	N·m	63.7					Product weight		kg	29
								Housing color		Gray	

Note : Input inertia : J is calculated in dwell.

(1N=0.102kgf)

Mounted accessories



Precautions

- Models 8D, 8E, and 8R can be equipped with reducer R65.
- The reducer can be mounted in 16 different positions as shown on page of Reducer.
- Models 8D, 8E, and 8R can be equipped with torque limiters 7TF, 8TF, 7TC and 8TC.
- Torque limiter TC-types require a collar for mounting. Reducer R65 requires a collar for mounting.

## 11D/11E/11R Dimensions

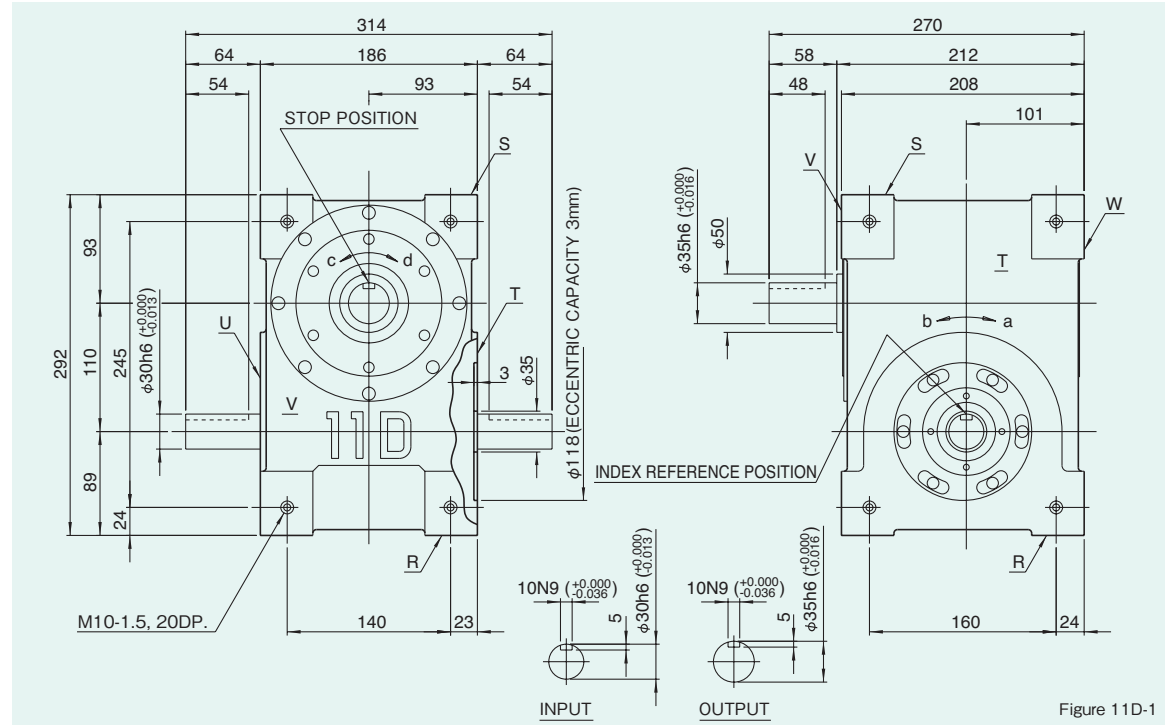
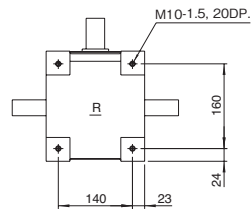


Figure 11D-1

### Mounting hole locations

Figure 11D-2



Dimension of R and S surface

### Locations of oil plug, etc., and oil capacity

Figure 11D-3

Mounting position	1	2	3	4	5	6
Location						
Oil capacity (ℓ)	2.0	1.4	0.9	0.9	1.2	1.3

### Precautions

- Each point indicated in the mounting positions shown in Figure 11D-3 represents (starting at top) the oil plug (PT1/2), oil level (VA), and drain (PT1/2).
- The mounting positions correspond to code i for the indexing, oscillating, and rotary drives.
- The oil levels indicated in Figure 11D-3 are given in general figures and will differ according to the profile of the cam and the number of cam followers.

### Specifications

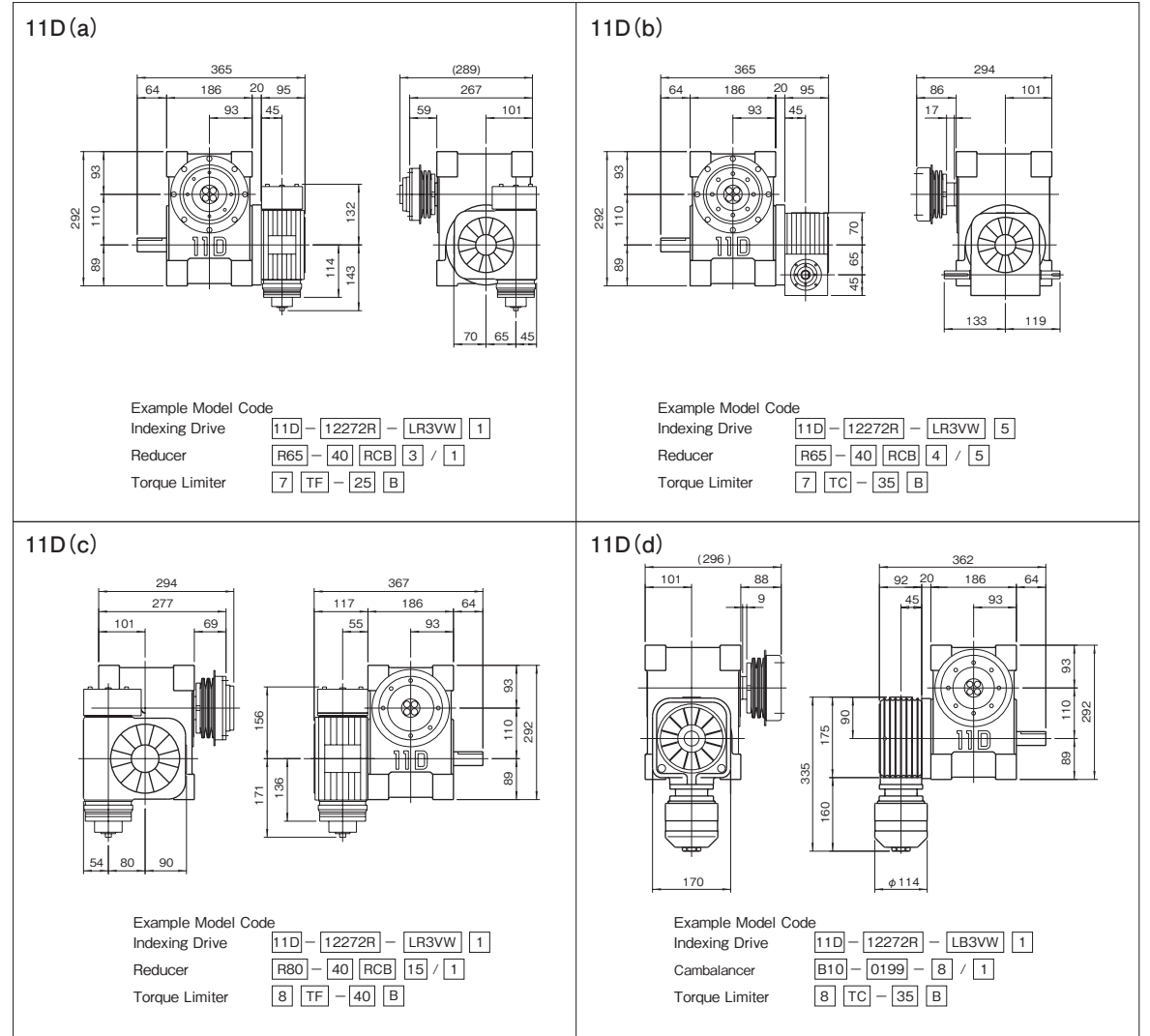
Table 11D-1

Item	Symbol	Unit	Value	Item	Symbol	Unit	Value	Item	Symbol	Unit	Value
Output allowable axial load	P <sub>1</sub>	N	4900	Input allowable axial load	P <sub>4</sub>	N	3528	Indexing accuracy (1 DWELL)		sec	±30
Output allowable radial load	P <sub>2</sub>	N	5390	Input maximum repetitive bending force	P <sub>5</sub>	N	2842	Indexing accuracy (2 DWELL)		sec	±60
Output static torque	T <sub>s</sub>	N·m	Refer to Torque Capacity Table	Input maximum repetitive allowable torque	P <sub>6</sub>	N·m	313.6	Indexing accuracy (3 DWELL)		sec	±90
Output torsional rigidity	K <sub>1</sub>	N·m/rad	8.82×10 <sup>4</sup>	Input torsional rigidity	K <sub>2</sub>	N·m/rad	3.04×10 <sup>4</sup>	Indexing accuracy (4 DWELL)		sec	±120
Output inertia	J <sub>0</sub>	kg·m <sup>2</sup>	9.05×10 <sup>-3</sup>	Input inertia	J <sub>1</sub>	kg·m <sup>2</sup>	7.0×10 <sup>-3</sup>	Repetitive accuracy		sec	15
Output allowable bending moment	P <sub>3</sub>	N·m	166.6					Product weight		kg	51
								Housing color			Gray

Note : Input inertia : J is calculated in dwell.

(1N=0.102kgf)

## Mounted accessories



### Precautions

- Models 11D, 11E, and 11R can be equipped with reducers R65 and R80.
- The reducer can be mounted in 16 different positions as shown on page of Reducer.
- Models 11D, 11E, and 11R can be equipped with torque limiters 7TF, 8TF, 11TF, 7TC, 8TC and 11TC.
- Torque limiter TC-types require a collar for mounting. Reducer R65 requires a collar for mounting.

## 14D/14E/14R Dimensions

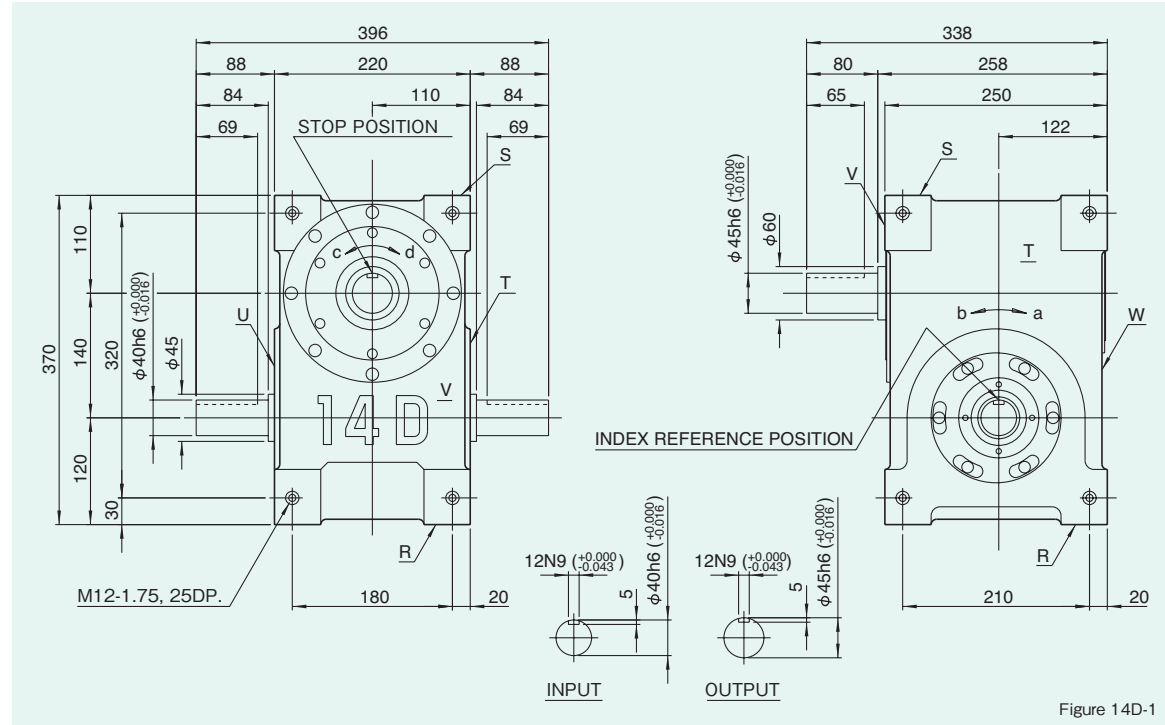
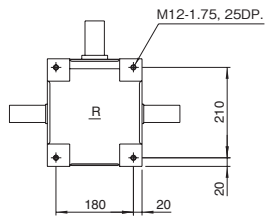


Figure 14D-1

### Mounting hole locations

Figure 14D-2



Dimension of R and S surface

### Locations of oil plug, etc., and oil capacity

Figure 14D-3

Mounting position	1	2	3	4	5	6
Location						
Oil capacity (ℓ)	4.3	4.3	4.1	4.1	2.7	5.1

### Precautions

- Each point indicated in the mounting positions shown in Figure 14D-3 represents (starting at top) the oil plug (PT1/2), oil level (VA), and drain (PT1/2).
- The mounting positions correspond to code i for the indexing, oscillating, and rotary drives.
- The oil levels indicated in Figure 14D-3 are given in general figures and will differ according to the profile of the cam and the number of cam followers.

### Specifications

Table 14D-1

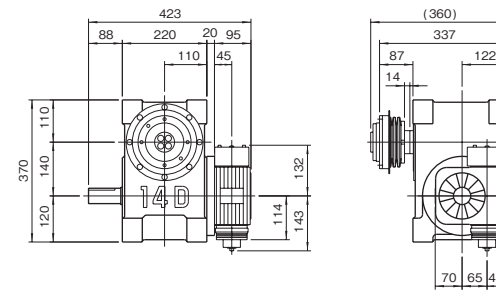
Item	Symbol	Unit	Value	Item	Symbol	Unit	Value	Item	Symbol	Unit	Value
Output allowable axial load	P <sub>1</sub>	N	7154	Input allowable axial load	P <sub>4</sub>	N	4312	Indexing accuracy (1 DWELL)		sec	±30
Output allowable radial load	P <sub>2</sub>	N	8428	Input maximum repetitious bending force	P <sub>5</sub>	N	5488	Indexing accuracy (2 DWELL)		sec	±60
Output static torque	T <sub>s</sub>	N·m	Refer to Torque Capacity Table	Input maximum repetitious allowable torque	P <sub>6</sub>	N·m	735	Indexing accuracy (3 DWELL)		sec	±90
Output torsional rigidity	K <sub>1</sub>	N·m/rad	1.86×10 <sup>5</sup>	Input torsional rigidity	K <sub>2</sub>	N·m/rad	7.84×10 <sup>4</sup>	Indexing accuracy (4 DWELL)		sec	±120
Output inertia	J <sub>0</sub>	kg·m <sup>2</sup>	2.63×10 <sup>-2</sup>	Input inertia	J <sub>1</sub>	kg·m <sup>2</sup>	2.75×10 <sup>-2</sup>	Repetitive accuracy		sec	15
Output allowable bending moment	P <sub>3</sub>	N·m	313.6					Product weight		kg	120
								Housing color		Gray	

Note : Input inertia : J is calculated in dwell.

(1N=0.102kgf)

## Mounted accessories

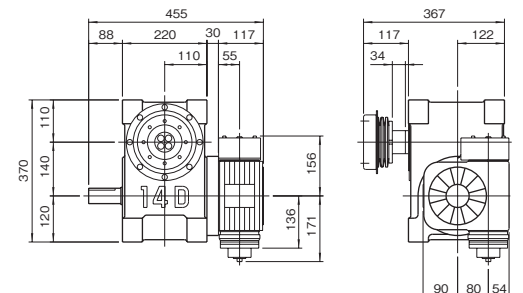
### 14D (a)



#### Example Model Code

Indexing Drive **14D** - **12272R** - **LR3VV** **1**  
 Reducer **R65** - **40** **RCB** **3** / **1**  
 Torque Limiter **8** **TF** - **40** **B**

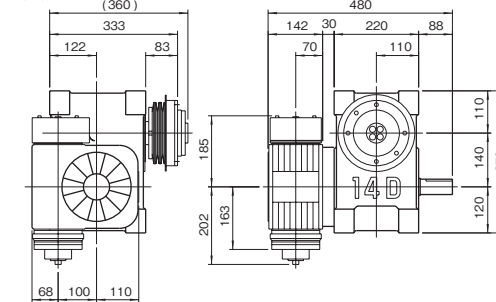
### 14D (b)



#### Example Model Code

Indexing Drive **14D** - **12272R** - **LR3VV** **1**  
 Reducer **R80** - **40** **RCB** **3** / **1**  
 Torque Limiter **8** **TC** - **45** **B**

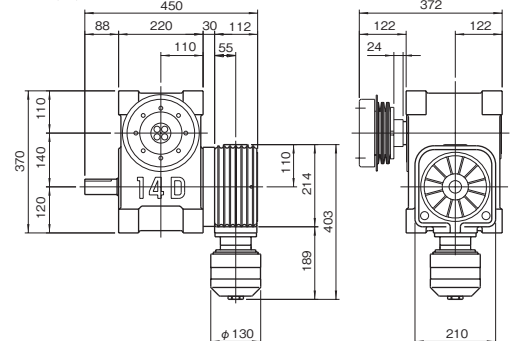
### 14D (c)



#### Example Model Code

Indexing Drive **14D** - **12272R** - **LR3VV** **1**  
 Reducer **R100** - **40** **RCB** **15** / **1**  
 Torque Limiter **11** **TF** - **85** **B**

### 14D (d)



#### Example Model Code

Indexing Drive **14D** - **12272R** - **LB3VV** **1**  
 Cambalancer **B12** - **0199** - **4** / **1**  
 Torque Limiter **11** **TC** - **65** **B**

### Precautions

- Models 14D, 14E, and 14R can be equipped with reducers R65, R80 and R100.
- The reducer can be mounted in 16 different positions as shown on page of Reducer.
- Models 14D, 14E, and 14R can be equipped with torque limiters 8TF, 11TF, 14TF, 8TC, 11TC and 14TC.
- Torque limiter TC-types require a collar for mounting. Reducers require a collar for mounting.



## 17D/17E/17R Dimensions

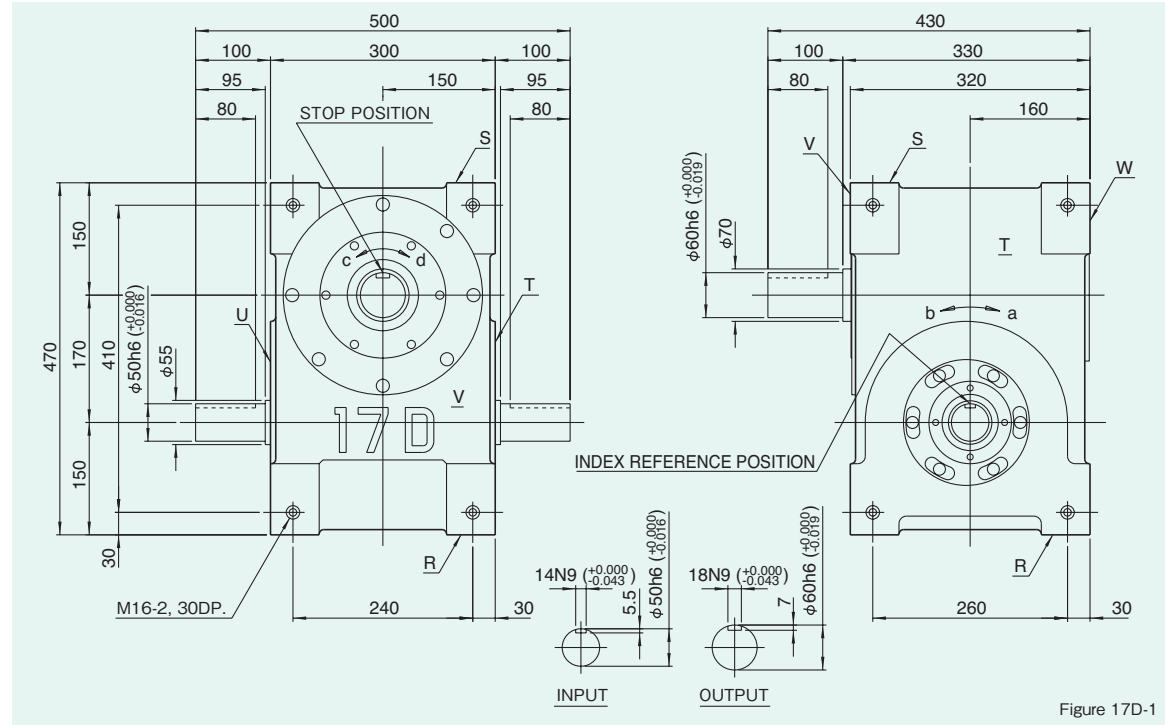
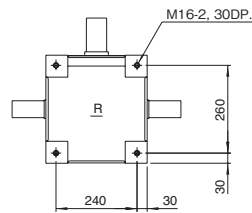


Figure 17D-1

### Mounting hole locations

Figure 17D-2



Dimension of R and S surface

### Locations of oil plug, etc., and oil capacity

Figure 17D-3

Mounting position	1	2	3	4	5	6
Location						
Oil capacity (ℓ)	10	9	9	9	4	7

### Precautions

- Each point indicated in the mounting positions shown in Figure 17D-3 represents (starting at top) the oil plug (PT3/4), oil level (VB), and drain (PT3/4).
- The mounting positions correspond to code i for the indexing, oscillating, and rotary drives.
- The oil levels indicated in Figure 17D-3 are given in general figures and will differ according to the profile of the cam and the number of cam followers.

### Specifications

Table 17D-1

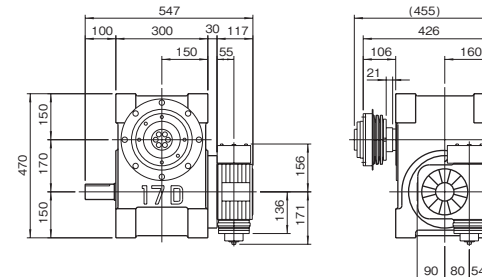
Item	Symbol	Unit	Value	Item	Symbol	Unit	Value	Item	Symbol	Unit	Value
Output allowable axial load	P <sub>1</sub>	N	8134	Input allowable axial load	P <sub>4</sub>	N	5782	Indexing accuracy (1 DWELL)		sec	±30
Output allowable radial load	P <sub>2</sub>	N	9604	Input maximum repetitious bending force	P <sub>5</sub>	N	9800	Indexing accuracy (2 DWELL)		sec	±60
Output static torque	T <sub>s</sub>	N·m	Refer to Torque Capacity Table	Input maximum repetitious allowable torque	P <sub>6</sub>	N·m	1421	Indexing accuracy (3 DWELL)		sec	±90
Output torsional rigidity	K <sub>1</sub>	N·m/rad	4.02×10 <sup>5</sup>	Input torsional rigidity	K <sub>2</sub>	N·m/rad	1.37×10 <sup>5</sup>	Indexing accuracy (4 DWELL)		sec	±120
Output inertia	J <sub>o</sub>	kg·m <sup>2</sup>	6.25×10 <sup>-2</sup>	Input inertia	J <sub>1</sub>	kg·m <sup>2</sup>	7.25×10 <sup>-2</sup>	Repetitive accuracy		sec	15
Output allowable bending moment	P <sub>3</sub>	N·m	392					Product weight		kg	200
								Housing color			Gray

Note : Input inertia : J is calculated in dwell.

(1N=0.102kgf)

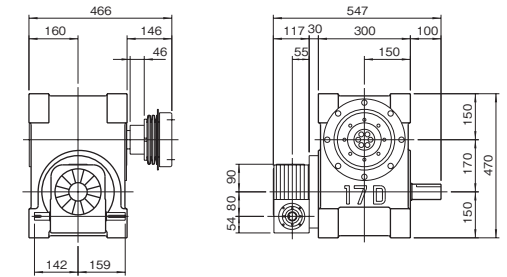
## Mounted accessories

### 17D (a)



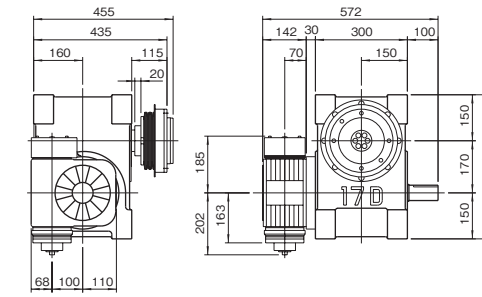
Example Model Code  
 Indexing Drive 17D - 12272R - LR3VV 1  
 Reducer R80 - 40 RCB 3 / 1  
 Torque Limiter 11 TF - 120 B

### 17D (b)



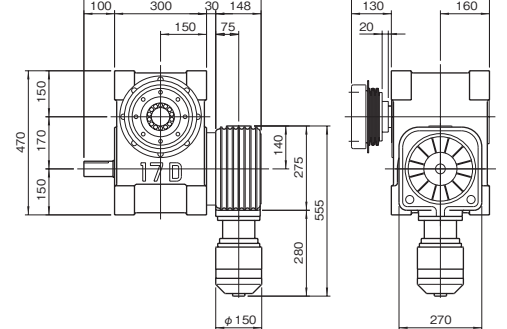
Example Model Code  
 Indexing Drive 17D - 12272R - LR3VV 5  
 Reducer R80 - 40 RA 14 / 5  
 Torque Limiter 11 TC - 100 B

### 17D (c)



Example Model Code  
 Indexing Drive 17D - 12272R - LR3VV 1  
 Reducer R100 - 40 RCB 15 / 1  
 Torque Limiter 14 TF - 120 B

### 17D (d)



Example Model Code  
 Indexing Drive 17D - 12272R - LB3VV 1  
 Cambalancer B16 - 0199 - 4 / 1  
 Torque Limiter 14 TC - 130 B

### Precautions

- Models 17D, 17E, and 17R can be equipped with reducers R80 and R100.
- The reducer can be mounted in 16 different positions as shown on page of Reducer.
- Models 17D, 17E, and 17R can be equipped with torque limiters 11TF, 14TF, 11TC and 14TC.
- Torque limiter TF-types require a collar for mounting.
- Torque limiter TC-types require a collar for mounting.

## 18D/18R Dimensions

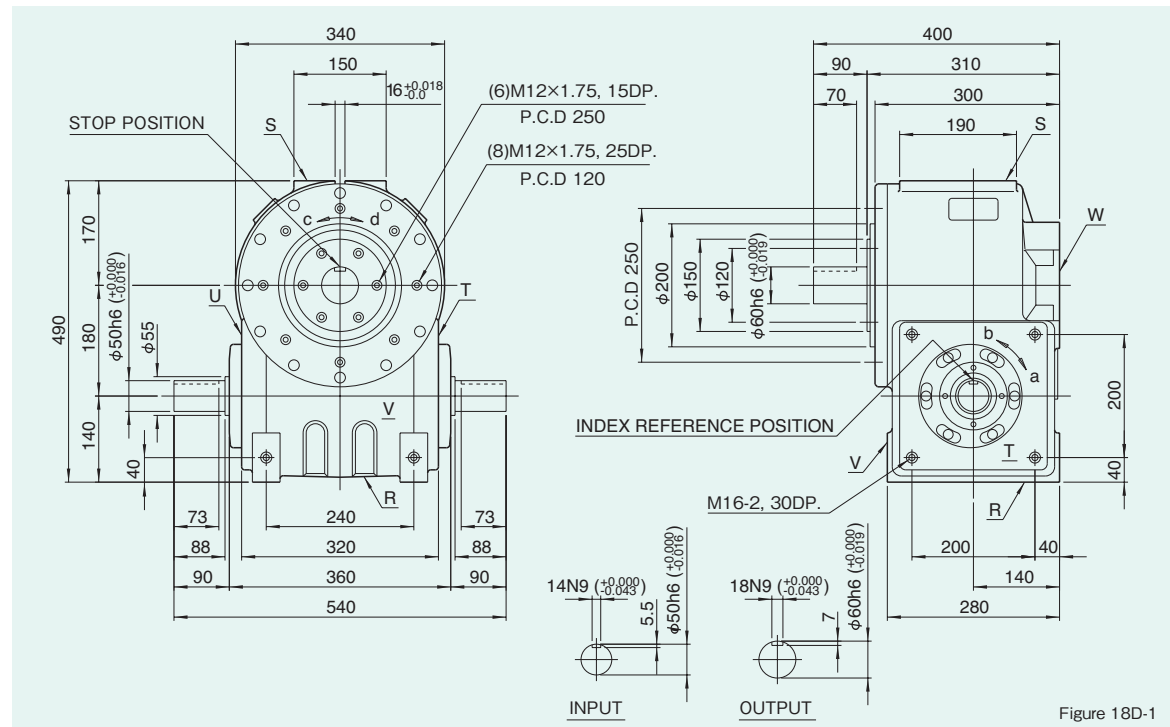
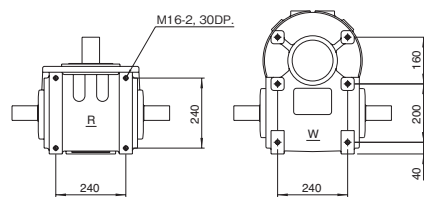


Figure 18D-1

### Mounting hole locations

Figure 18D-2



Dimension of R and W surface

### Locations of oil plug, etc., and oil capacity

Figure 18D-3

Mounting position	1	5
Location		
Oil capacity (ℓ)	8.7	5.0

### Precautions

- Each point indicated in the mounting positions shown in Figure 18D-3 represents (starting at top) the oil plug (PT3/4), oil level (VB), and drain (PT3/4).
- The mounting positions correspond to code i for the indexing, oscillating, and rotary drives.
- The oil levels indicated in Figure 18D-3 are given in general figures and will differ according to the profile of the cam and the number of cam followers.

### Specifications

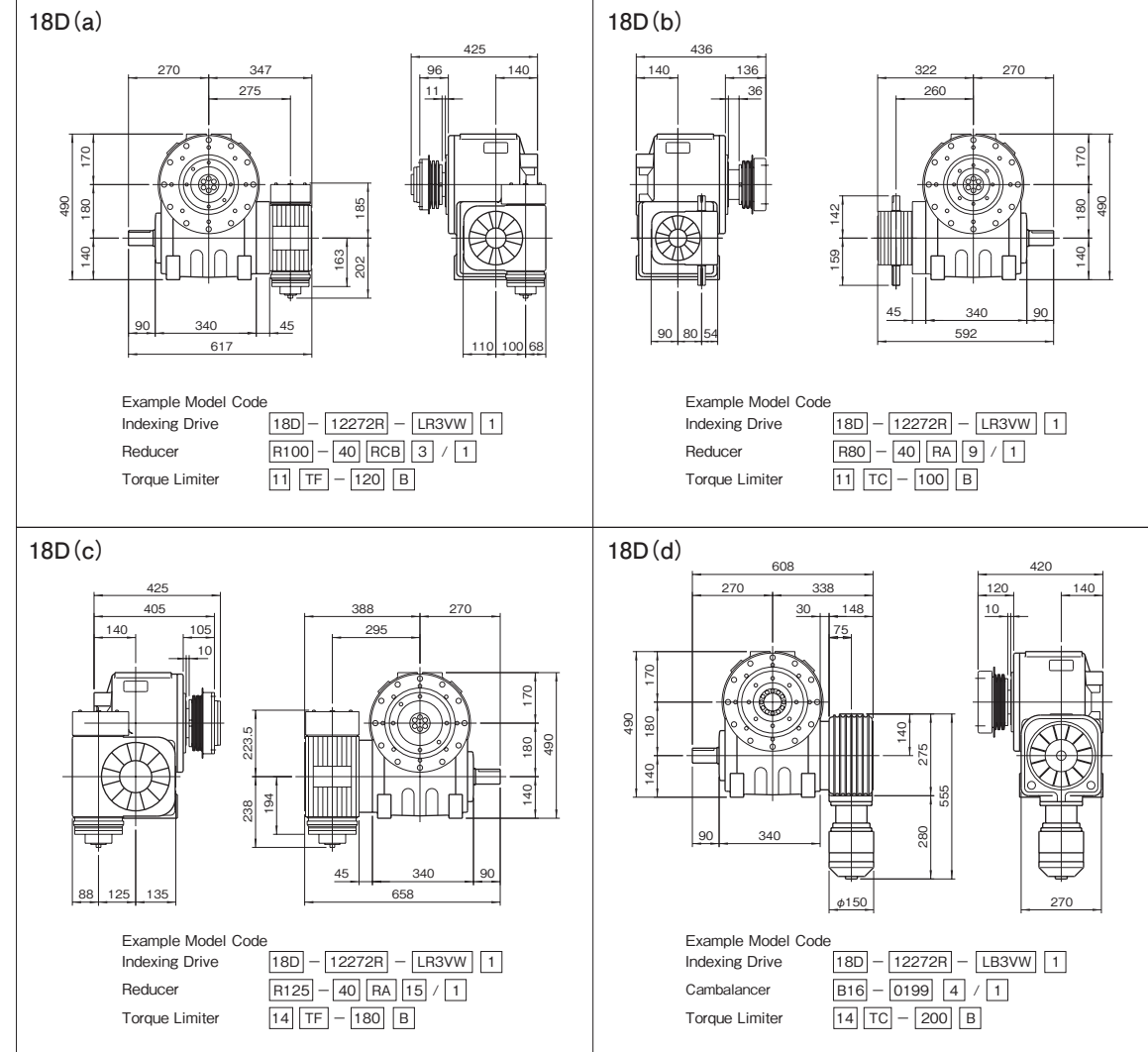
Table 18D-1

Item	Symbol	Unit	Value	Item	Symbol	Unit	Value	Item	Symbol	Unit	Value
Output allowable axial load	P <sub>1</sub>	N	11760	Input allowable axial load	P <sub>4</sub>	N	5782	Indexing accuracy (1 DWELL)		sec	±30
Output allowable radial load	P <sub>2</sub>	N	14700	Input maximum repetitious bending force	P <sub>5</sub>	N	10241	Indexing accuracy (2 DWELL)		sec	±60
Output static torque	T <sub>s</sub>	N·m		Input maximum repetitious allowable torque	P <sub>6</sub>	N·m	1441	Indexing accuracy (3 DWELL)		sec	±90
Output torsional rigidity	K <sub>1</sub>	N·m/rad	4.9×10 <sup>5</sup>	Input torsional rigidity	K <sub>2</sub>	N·m/rad	1.37×10 <sup>5</sup>	Indexing accuracy (4 DWELL)		sec	±120
Output inertia	J <sub>0</sub>	kg·m <sup>2</sup>	0.195	Input inertia	J <sub>1</sub>	kg·m <sup>2</sup>	9.75×10 <sup>-2</sup>	Repetitive accuracy		sec	15
Output allowable bending moment	P <sub>3</sub>	N·m	931					Product weight		kg	220
								Housing color			Gray

Note : Input inertia : J is calculated in dwell.

(1N=0.102kgf)

## Mounted accessories



### Precautions

- Models 18D and 18R can be equipped with reducers R80, R100 and R125.
- The reducer can be mounted in 16 different positions as shown on page of Reducer.
- Models 18D and 18R can be equipped with torque limiters 11TF, 14TF, 18TF, 11TC, 14TC and 18TC.
- Torque limiter TF-types require a collar for mounting.
- Torque limiter TC-types require a collar for mounting.