



4.5D/4.5E/4.5R Dimensions

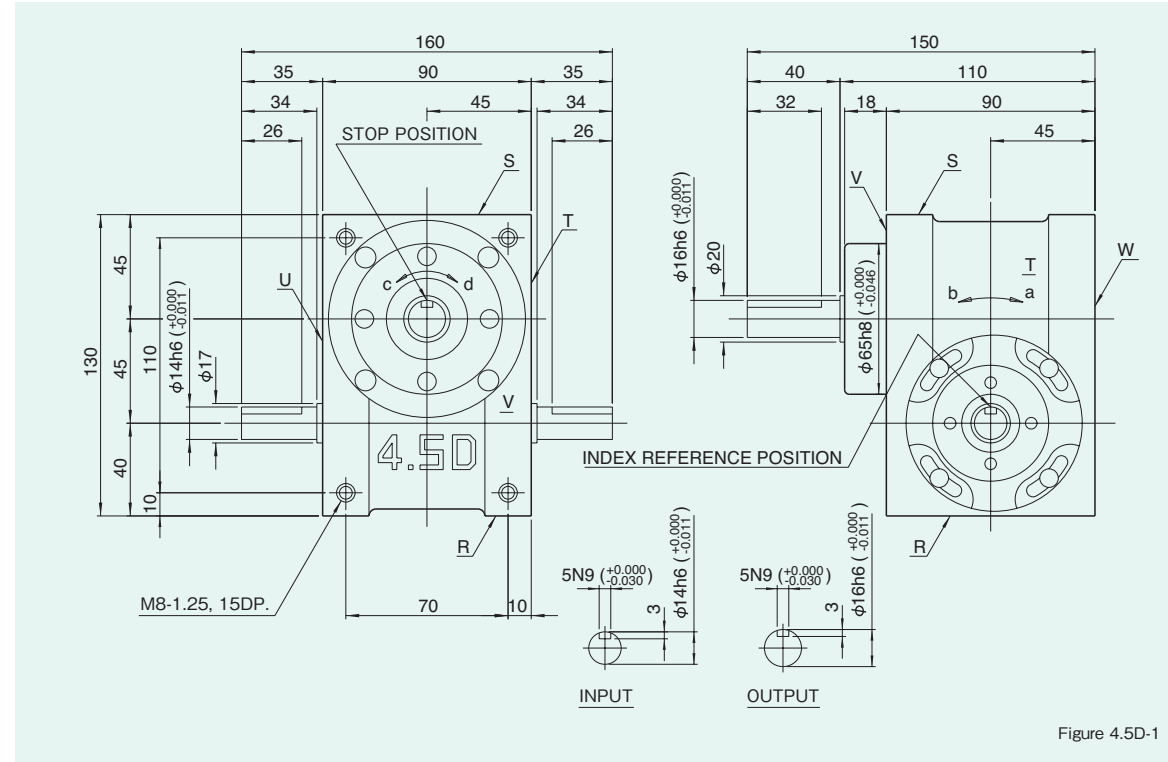
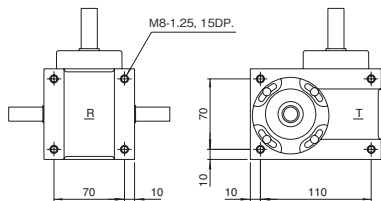


Figure 4.5D-1

Mounting hole locations Figure 4.5D-2



Dimension R,S,T, and U surface

Specifications

Table 4.5D-1

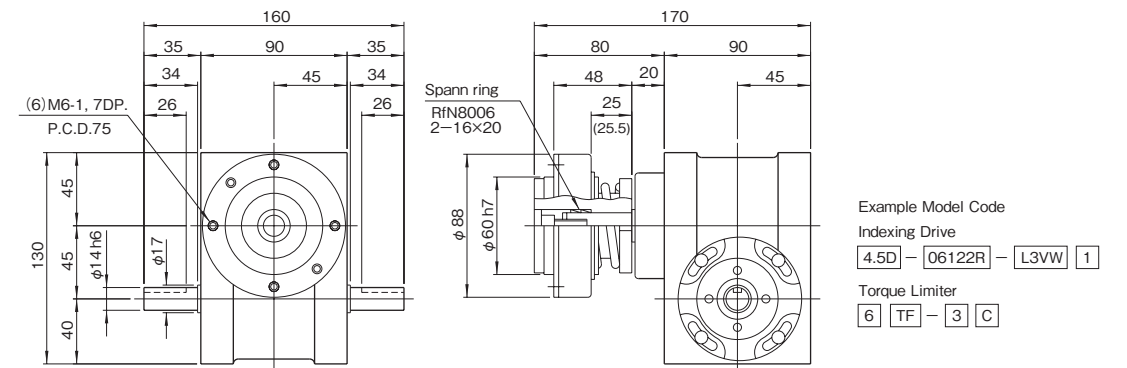
| Item | Symbol | Unit | Value | Item | Symbol | Unit | Value | Item | Symbol | Unit | Value |
|---------------------------------|----------------|-------------------|--------------------------------|--|----------------|-------------------|----------------------|-----------------------------|--------|------|-------|
| Output allowable axial load | P ₁ | N | 784 | Input allowable axial load | P ₄ | N | 833 | Indexing accuracy (1 DWELL) | | sec | ±60 |
| Output allowable radial load | P ₂ | N | 711 | Input maximum repetitious bending force | P ₅ | N | 735 | Indexing accuracy (2 DWELL) | | sec | ±120 |
| Output static torque | T _s | N·m | Refer to Torque Capacity Table | Input maximum repetitious allowable torque | P ₆ | N·m | 39.2 | Indexing accuracy (3 DWELL) | | sec | ±180 |
| Output torsional rigidity | K ₁ | N·m/rad | 6.08×10 ³ | Input torsional rigidity | K ₂ | N·m/rad | 2.74×10 ³ | Indexing accuracy (4 DWELL) | | sec | ±240 |
| Output inertia | J ₀ | kg·m ² | 1.5×10 ⁻⁴ | Input inertia | J ₁ | kg·m ² | 8.0×10 ⁻⁵ | Repetitive accuracy | | sec | 30 |
| Output allowable bending moment | P ₃ | N·m | 24.5 | | | | | Product weight | | kg | 6 |
| | | | | | | | | Housing color | | | Gray |

Note : Input inertia : J is calculated in dwell.

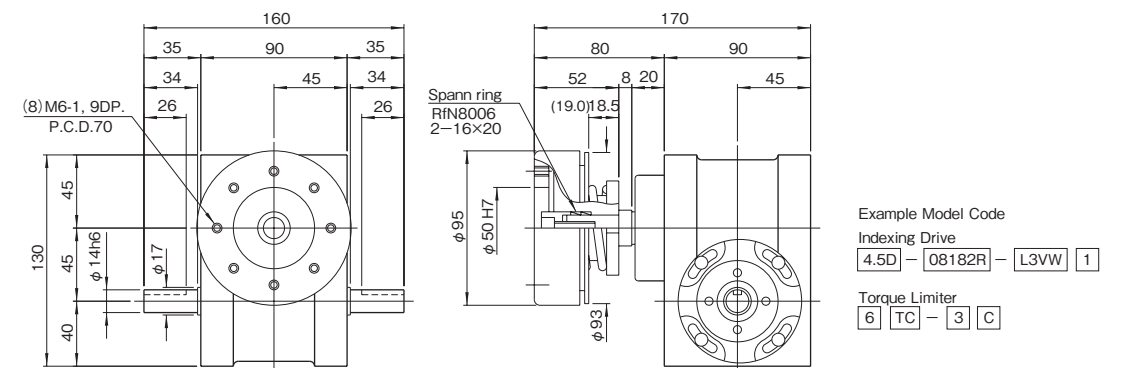
(1N=0.102kgf)

Mounted accessories

4.5D (a)



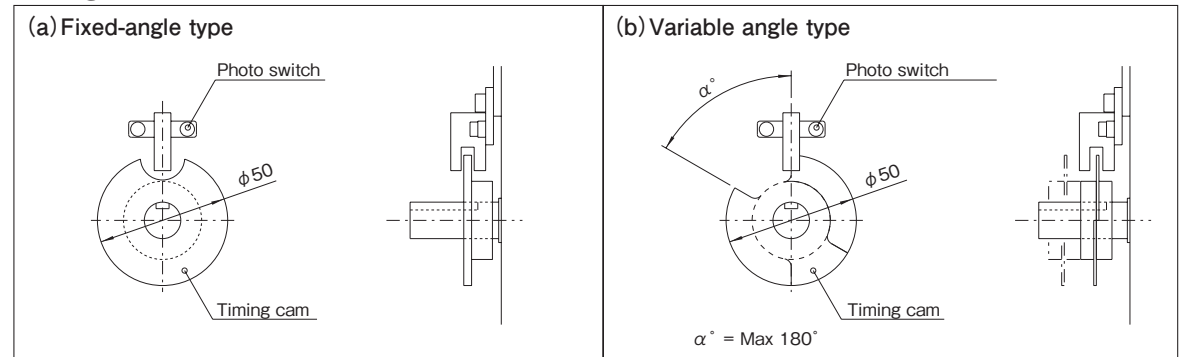
4.5D (b)



Precautions

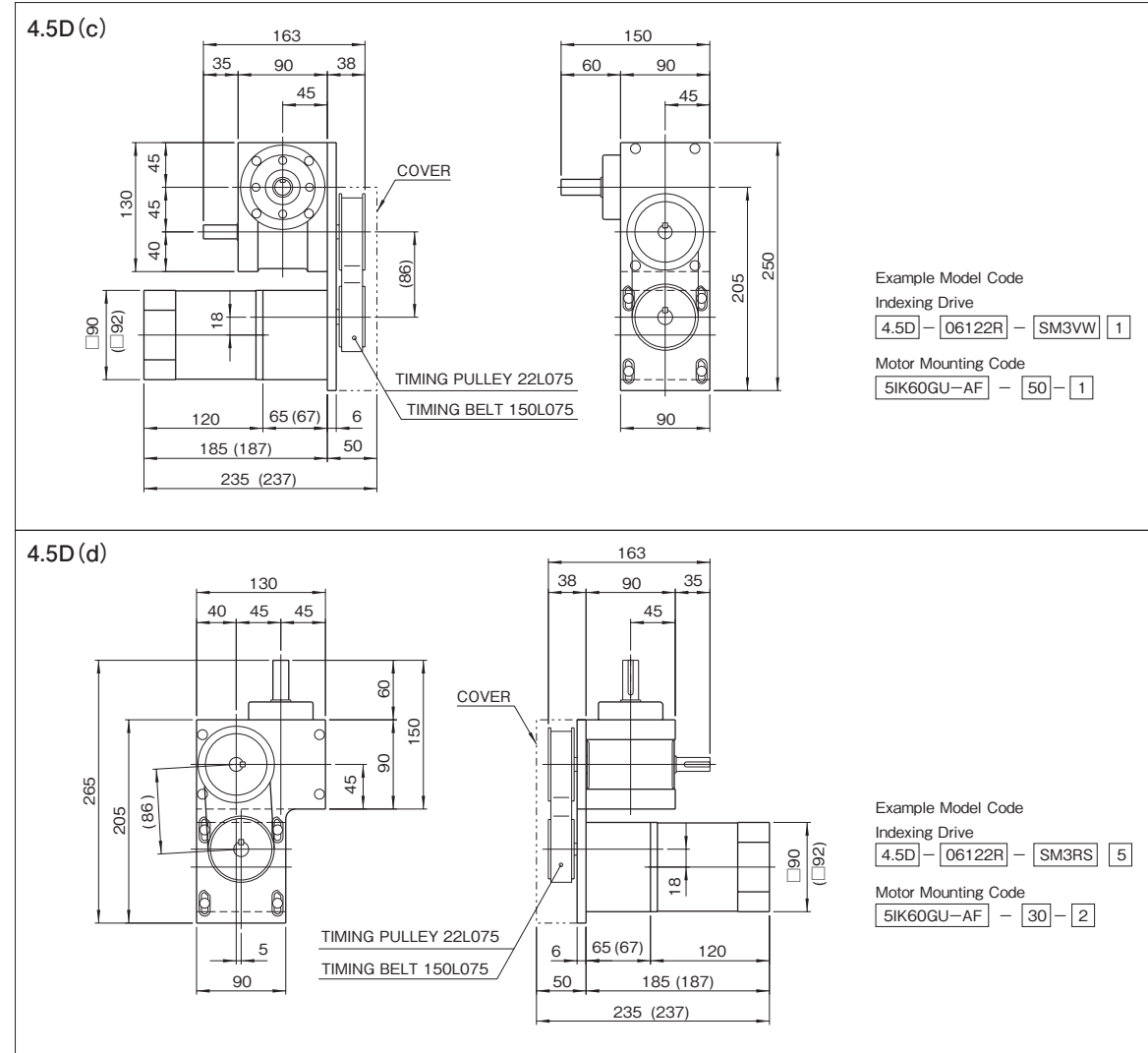
- Models 4.5D,4.5E and 4.5R can be equipped with Torque limiters 6TF and 6TC.
- Torque limiter TC-type require a collar for mounting.

Timing cam-Photo switch

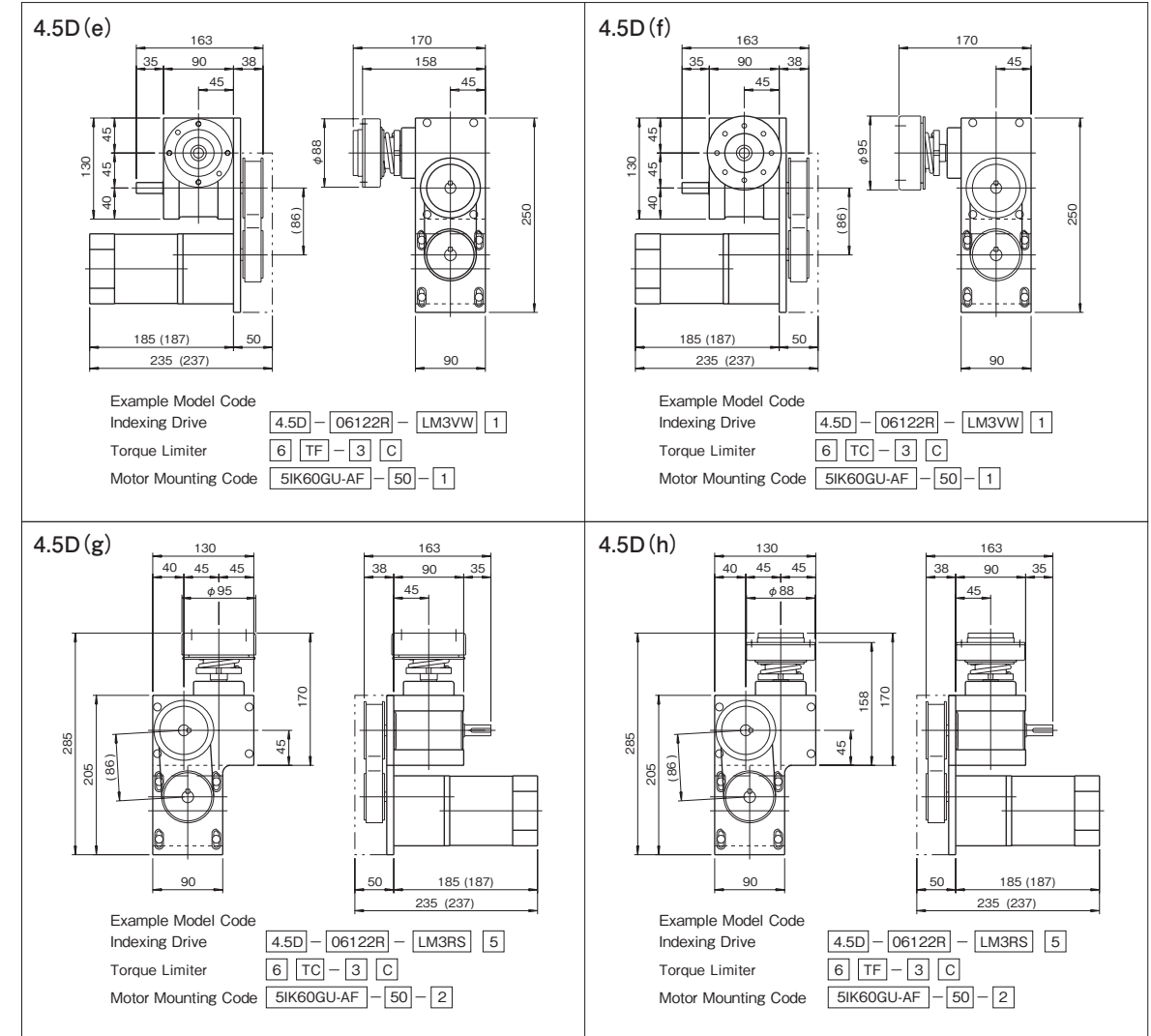


※Up to 3 sets of timing cams and photo switches can be added as necessary.

Mounted accessories



Mounted accessories



Induction motor specifications

Table 4.5D-2

| Motor model | Output power (W) | Frequency (Hz) | Voltage (V) | Current (A) | Starting torque (N·m) | Rated torque (N·m) | Rotating speed (rpm) | Capacitor (μF) | Gear head model | |
|----------------|------------------|----------------|-------------|-------------|-----------------------|--------------------|----------------------|----------------|-------------------|----|
| | | | | | | | | | Ball bearing type | |
| Oriental Motor | 5IK60GU-AF | 60 | 50 60 | 1.4 | 0.32 0.30 | 0.45 0.38 | 1300 1550 | 15.0 | 5GU | KB |
| Panasonic | M9IC60G4L | 60 | 50 60 | 1.3 1.2 | 0.441 | 0.451 0.363 | 1275 1575 | 15.0 | M9GD | B |

Allowable torque with gear head (N·m)

Table 4.5D-3

| Rotating speed (rpm) | Allowable torque (N·m) | | | | | | | | | |
|------------------------|------------------------|------|------|------|------|------|-------|-------|-------|-------|
| | 200 | 120 | 100 | 60 | 50 | 30 | 20 | 15 | 10 | |
| 50Hz Gear ratio | 7.5 | 12.5 | 15 | 25 | 30 | 50 | 75 | 100 | 150 | |
| 60Hz Gear ratio | 9 | 15 | 18 | 30 | 36 | 60 | 90 | 120 | 180 | |
| Allowable torque (N·m) | 5IK60GU-AF | 2.7 | 4.1 | 4.9 | 7.4 | 8.9 | 14.9 | 19.9 | 20 | 20 |
| | M9IC60G4L | 2.35 | 3.92 | 4.70 | 7.55 | 9.11 | 15.19 | 19.60 | 19.60 | 19.60 |

(1N·m=0.102kgf·m)

Precautions

- The mounting base of the motor mounts on the sides T or U of the indexing drive as shown in Figure 4.5D-(c),(d).
- Figure 4.5D-(c),(d) shows the opposite of when mounted on side U.
- Dimensions in parenthesis Panasonic motor.
- When ordering, always specify the gear reduction ratio along with the indexing drive code number.
- Note:For details on the induction motor, refer to the brochure for Oriental Motors(or Panasonic).

6D/6E/6R Dimensions

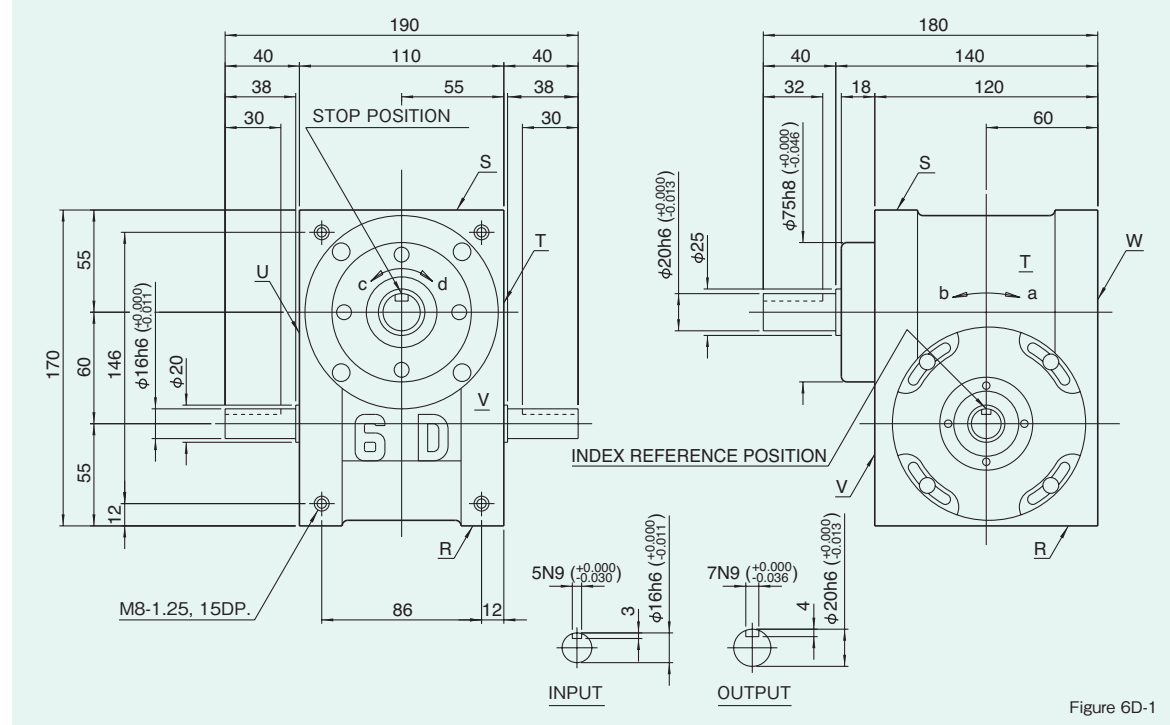
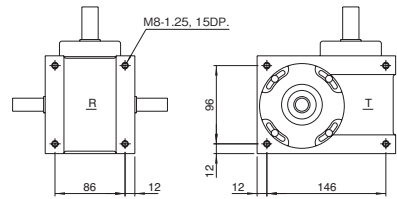


Figure 6D-1

Mounting hole locations

Figure 6D-2



Dimension R,S,T, and U surface

Locations of oil plug, etc., and oil capacity

Figure 6D-3

| Mounting position | 1 | 2 | 3 | 4 | 5 | 6 |
|-------------------|-----|------|------|------|-----|-----|
| Location | | | | | | |
| Oil capacity (ℓ) | 0.5 | 0.37 | 0.35 | 0.35 | 0.3 | 0.3 |

Precautions

- Each point indicated in the mounting positions shown in Figure 6D-3 represents (starting at top) the oil plug (PT3/8), oil level (VA-01), and drain (PT1/4).
- The mounting positions correspond to code i for the indexing, oscillating, and rotary drives.
- The oil levels indicated in Figure 6D-3 are given in general figures and will differ according to the profile of the cam and the number of cam followers.

Specifications

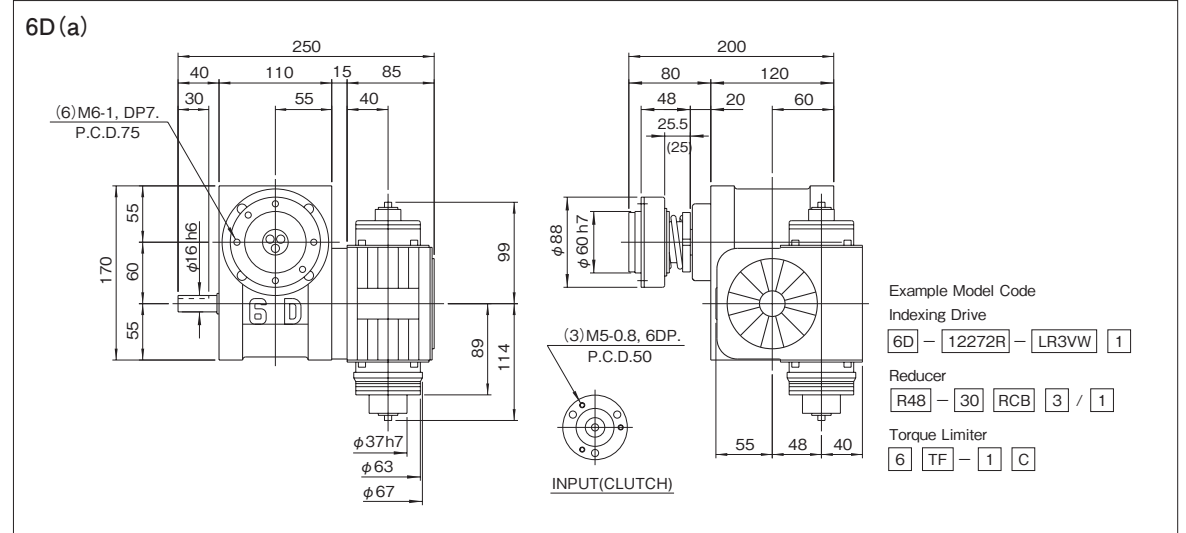
Table 6D-1

| Item | Symbol | Unit | Value | Item | Symbol | Unit | Value | Item | Symbol | Unit | Value |
|---------------------------------|----------------|-------------------|--------------------------------|---|----------------|-------------------|-----------------------|-----------------------------|--------|------|-------|
| Output allowable axial load | P ₁ | N | 1764 | Input allowable axial load | P ₄ | N | 980 | Indexing accuracy (1 DWELL) | | sec | ±45 |
| Output allowable radial load | P ₂ | N | 1470 | Input maximum repetitive bending force | P ₅ | N | 931 | Indexing accuracy (2 DWELL) | | sec | ±90 |
| Output static torque | T _s | N·m | Refer to Torque Capacity Table | Input maximum repetitive allowable torque | P ₆ | N·m | 58.8 | Indexing accuracy (3 DWELL) | | sec | ±135 |
| Output torsional rigidity | K ₁ | N·m/rad | 1.37×10 ¹ | Input torsional rigidity | K ₂ | N·m/rad | 4.12×10 ³ | Indexing accuracy (4 DWELL) | | sec | ±180 |
| Output inertia | J ₀ | kg·m ² | 3.4×10 ⁻⁴ | Input inertia | J ₁ | kg·m ² | 4.75×10 ⁻⁴ | Repetitive accuracy | | sec | 20 |
| Output allowable bending moment | P ₃ | N·m | 34.3 | | | | | Product weight | | kg | 10 |
| | | | | | | | | Housing color | | | Gray |

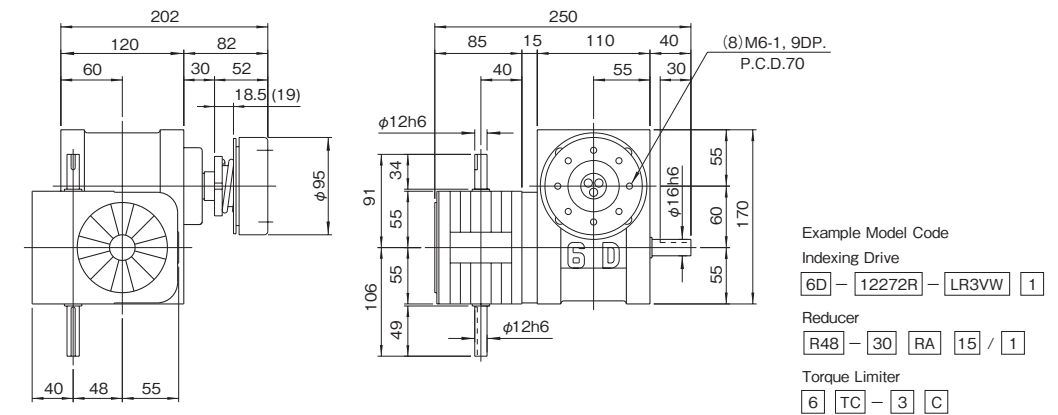
Note : Input inertia : J is calculated in dwell.

(1N=0.102kgf)

Mounted accessories



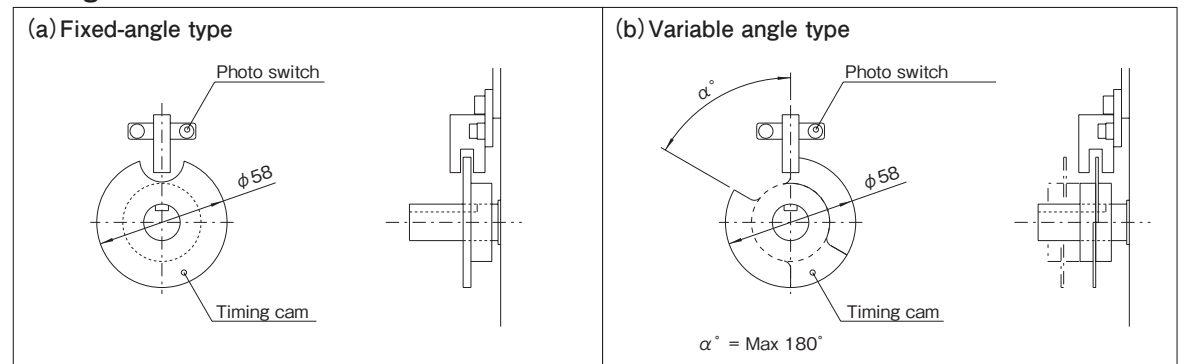
6D(b)



Precautions

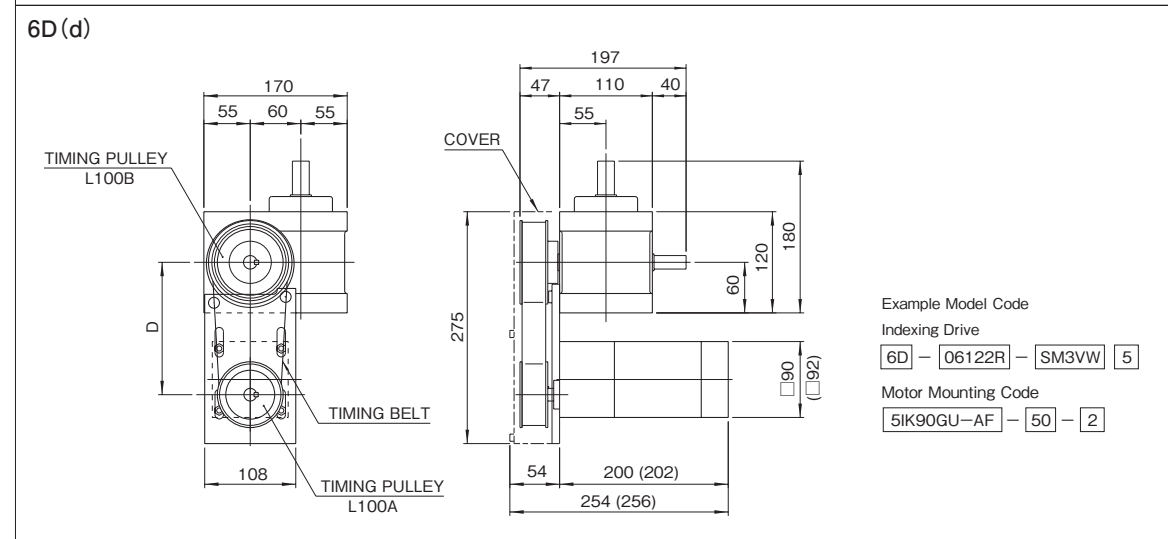
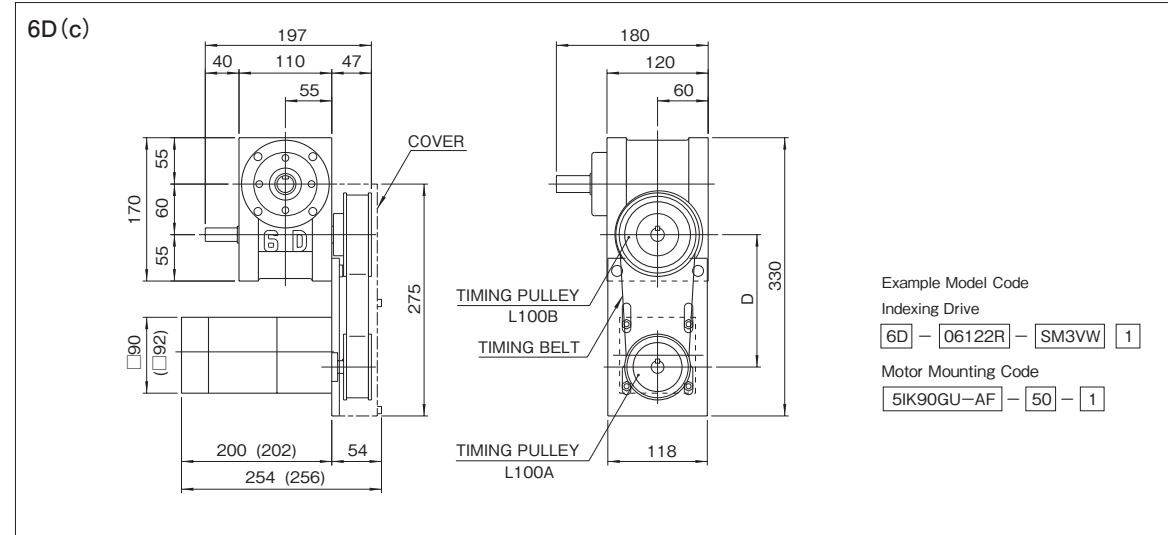
- Models 6D, 6E and 6R can be equipped with reducer R48.
- Models 6D, 6E, and 6R can be equipped with torque limiters 6TF and 6TC. Torque limiter TC-type require a collar for mounting.

Timing cam-Photo switch

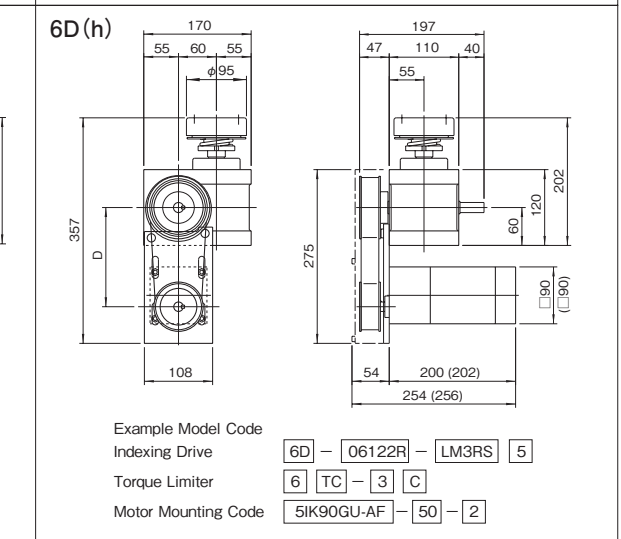
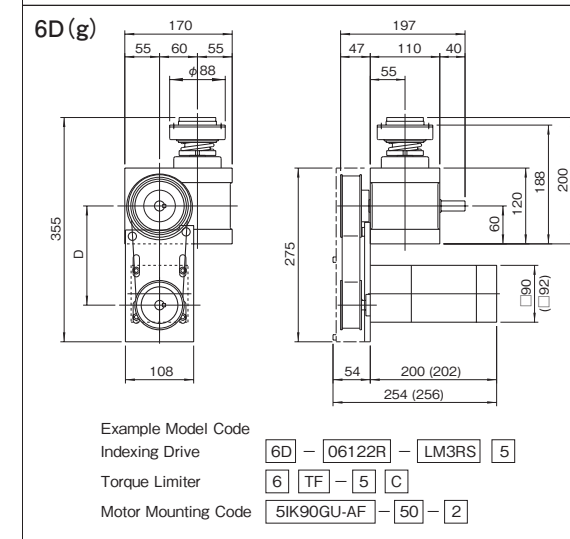
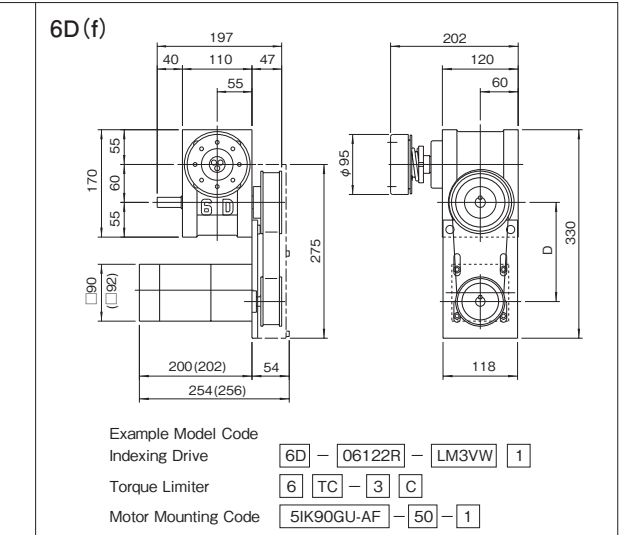
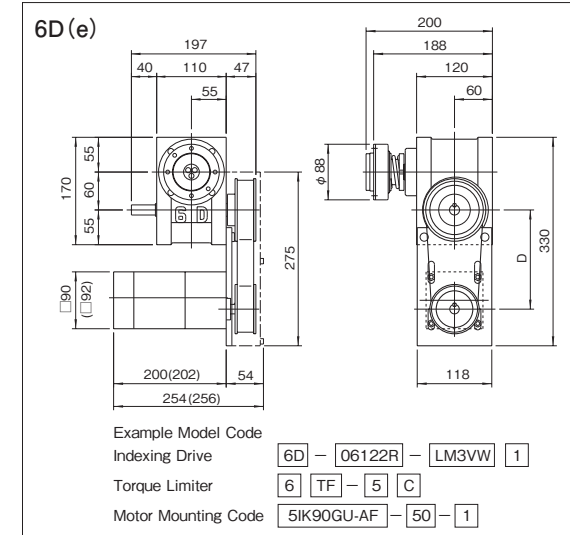


※Up to 3 sets of timing cams and photo switches can be added as necessary.

Mounted accessories



Mounted accessories



Induction motor specifications

Table 6D-2

| Maker | Motor model | Output power (W) | Frequency (Hz) | Voltage (V) | Current (A) | Starting torque (N·m) | Rated torque (N·m) | Rotating speed (rpm) | Capacitor (μ F) | Gear head model | |
|----------------|-------------|------------------|----------------|-------------|-------------|-----------------------|--------------------|----------------------|-----------------|-----------------|-------------------|
| | | | | | | | | | | 5GU□KB | Ball bearing type |
| Oriental motor | 5IK90GU-AF | 90 | 50 60 | 100 | 2.0 | 0.45 | 0.68 0.57 | 1300 1550 | 25.0 | 5GU□KB | |
| Panasonic | M9IC90G4L | 90 | 50 60 | 100 | 1.6 1.7 | 0.470 | 0.637 0.519 | 1325 1625 | 25.0 | M9GD□B | |

Allowable torque with gear head

Table 6D-3

| Rotating speed (rpm) | 200 | 120 | 100 | 60 | 50 | 30 | 20 | 15 | 10 |
|-----------------------|------------|------|------|------|-------|-------|-------|-------|-------|
| 50Hz Gear ratio | 7.5 | 12.5 | 15 | 25 | 30 | 50 | 75 | 100 | 150 |
| 60Hz Gear ratio | 9 | 15 | 18 | 30 | 36 | 60 | 90 | 120 | 180 |
| Allowable torque(N·m) | 5IK90GU-AF | 4.1 | 6.2 | 7.4 | 11.2 | 13.5 | 20 | 20 | 20 |
| | M9IC90G4L | 3.43 | 5.68 | 6.76 | 10.88 | 13.03 | 19.60 | 19.60 | 19.60 |

(1N·m=0.102kgf·m)

Timing transmission specifications

Table 6D-4

| Timing pulley reduction ratio | Pulley A Number of teeth | Pulley B Number of teeth | D | Belt Number |
|-------------------------------|--------------------------|--------------------------|-------|-------------|
| 1.5 | 20 | 30 | 146.8 | 210L teeth |

※Pulley gear ratio is 1.5. Make note of this when selecting gear ratios for the gear head.

Precautions

- The mounting base of the motor mounts on the sides T or U of the indexing drive as shown in Figure 6D-(c),(d).
- Figure 6D-(c),(d) shows the opposite of when mounted on side U.
- Dimensions in parenthesis indicate Panasonic motor.
- When ordering, always specify the gear reduction ratio along with the indexing drive code number.
- Note:For details on the induction motor, refer to the brochure for Oriental Motors (or Panasonic).

7D/7E/7R Dimensions

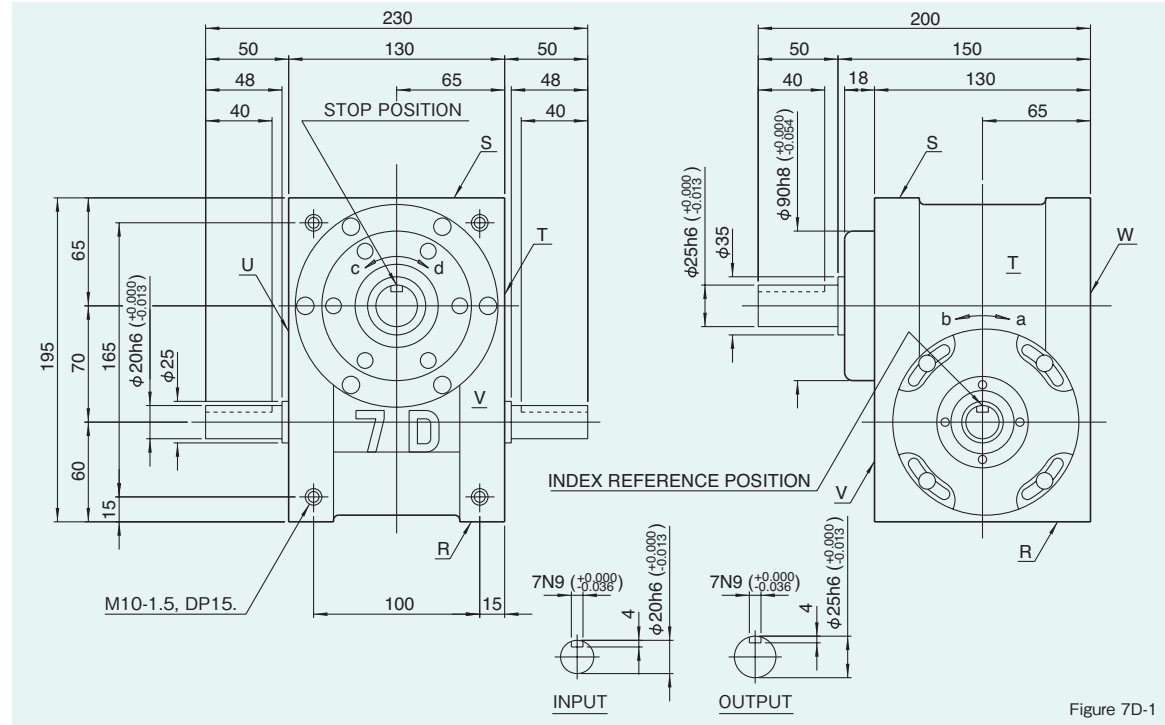
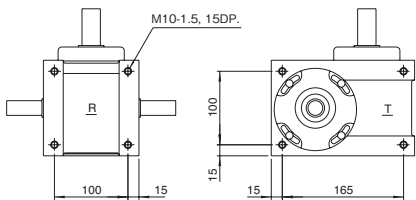


Figure 7D-1

7D

Mounting hole locations

Figure 7D-2



Dimension of R, S, T, and U surface

Locations of oil plug, etc., and oil capacity

Figure 7D-3

| Mounting position | 1 | 2 | 3 | 4 | 5 | 6 |
|-------------------|-----|-----|------|------|-----|-----|
| Location | | | | | | |
| Oil capacity (ℓ) | 0.6 | 0.6 | 0.55 | 0.55 | 0.4 | 0.4 |

Precautions

- Each point indicated in the mounting positions shown in Figure 7D-3 represents (starting at top) the oil plug (PT3/8), oil level (VA-01), and drain (PT1/4).
- The mounting positions correspond to code i for the indexing, oscillating, and rotary drives.
- The oil levels indicated in Figure 7D-3 are given in general figures and will differ according to the profile of the cam and the number of cam followers.

Specifications

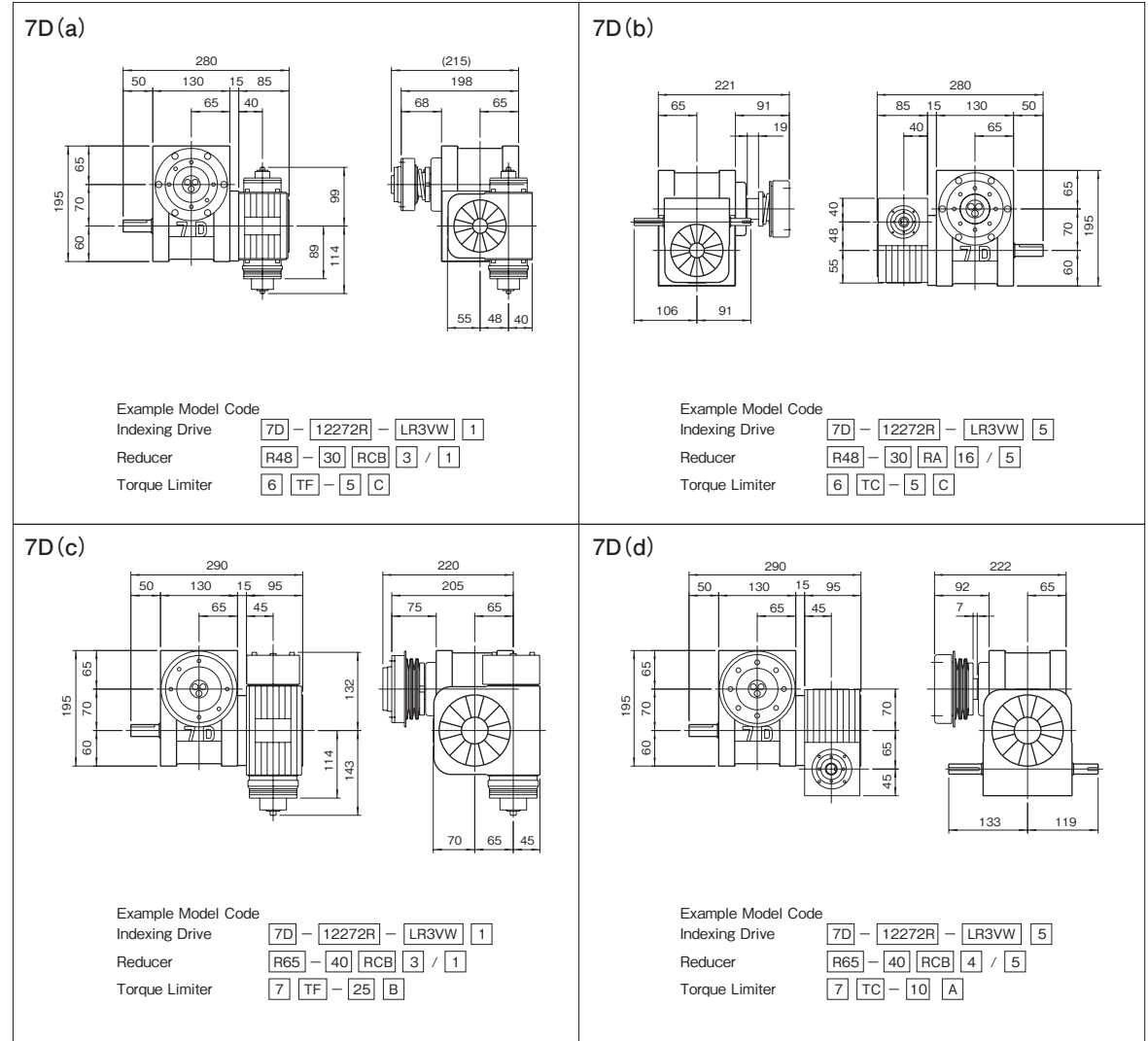
Table 7D-1

| Item | Symbol | Unit | Value | Item | Symbol | Unit | Value | Item | Symbol | Unit | Value |
|---------------------------------|----------------|-------------------|--------------------------------|--|----------------|-------------------|----------------------|-----------------------------|--------|------|-------|
| Output allowable axial load | P ₁ | N | 2156 | Input allowable axial load | P ₄ | N | 1470 | Indexing accuracy (1 DWELL) | | sec | ±30 |
| Output allowable radial load | P ₂ | N | 2156 | Input maximum repetitious bending force | P ₅ | N | 1078 | Indexing accuracy (2 DWELL) | | sec | ±60 |
| Output static torque | T _s | N·m | Refer to Torque Capacity Table | Input maximum repetitious allowable torque | P ₆ | N·m | 93.1 | Indexing accuracy (3 DWELL) | | sec | ±90 |
| Output torsional rigidity | K ₁ | N·m/rad | 2.84×10 ⁴ | Input torsional rigidity | K ₂ | N·m/rad | 8.43×10 ³ | Indexing accuracy (4 DWELL) | | sec | ±120 |
| Output inertia | J ₀ | kg·m ² | 1.05×10 ⁻³ | Input inertia | J ₁ | kg·m ² | 1.5×10 ⁻³ | Repetitive accuracy | | sec | 15 |
| Output allowable bending moment | P ₃ | N·m | 63.7 | | | | | Product weight | | kg | 16 |
| | | | | | | | | Housing color | | Gray | |

Note : Input inertia : J is calculated in dwell.

(1N=0.102kgf)

Mounted accessories



Precautions

- Models 7D, 7E, and 7R can be equipped with reducers R48 and R65.
- The reducer can be mounted in 16 different positions as shown on page of Reducer.
- Models 7D, 7E, and 7R can be equipped with torque limiters 6TF, 7TF, 6TC and 7TC.
- Torque limiter TC-types require a collar for mounting. Reducers require a collar for mounting.

7D

8D/8E/8R Dimensions

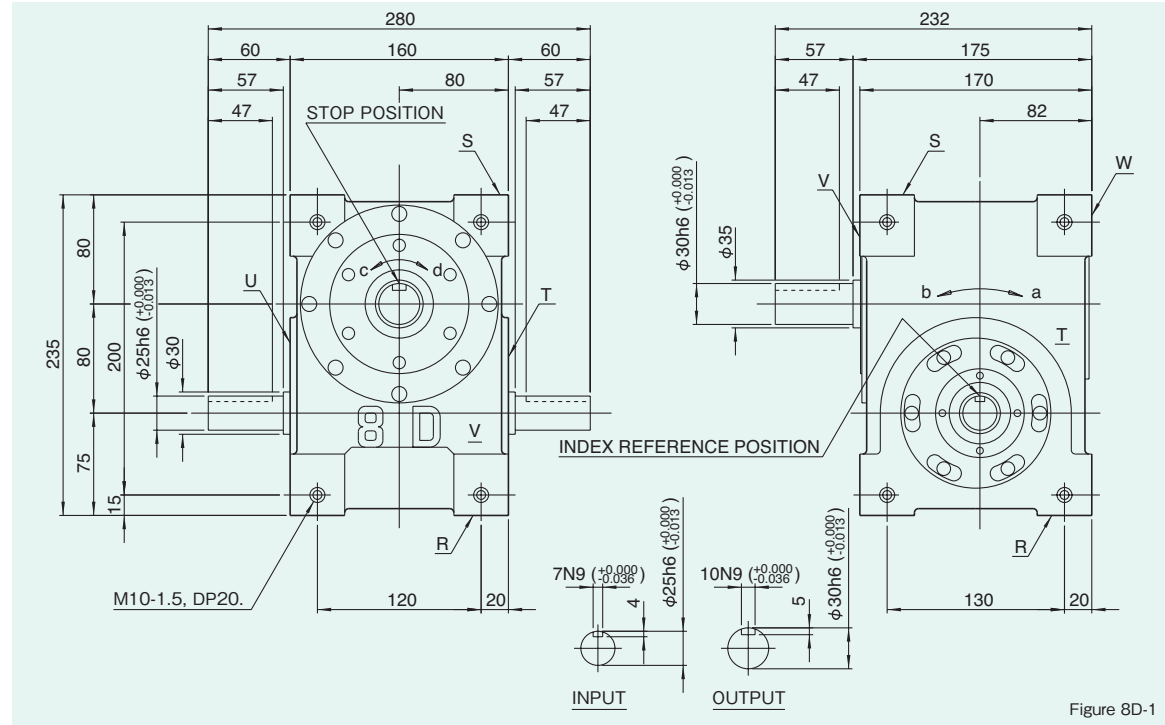
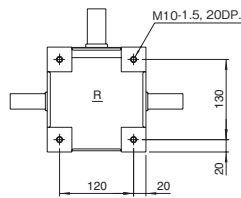


Figure 8D-1

Mounting hole locations

Figure 8D-2



Dimension of R and S surface

Locations of oil plug, etc., and oil capacity

Figure 8D-3

| Mounting position | 1 | 2 | 3 | 4 | 5 | 6 |
|-------------------|-----|-----|-----|-----|-----|-----|
| Location | | | | | | |
| Oil capacity (ℓ) | 1.2 | 0.8 | 1.4 | 1.2 | 0.7 | 1.4 |

Precautions

- Each point indicated in the mounting positions shown in Figure 8D-3 represents (starting at top) the oil plug (PT1/2), oil level (VA-01), and drain (PT1/2).
- The mounting positions correspond to code i for the indexing, oscillating, and rotary drives.
- The oil levels indicated in Figure 8D-3 are given in general figures and will differ according to the profile of the cam and the number of cam followers.

Specifications

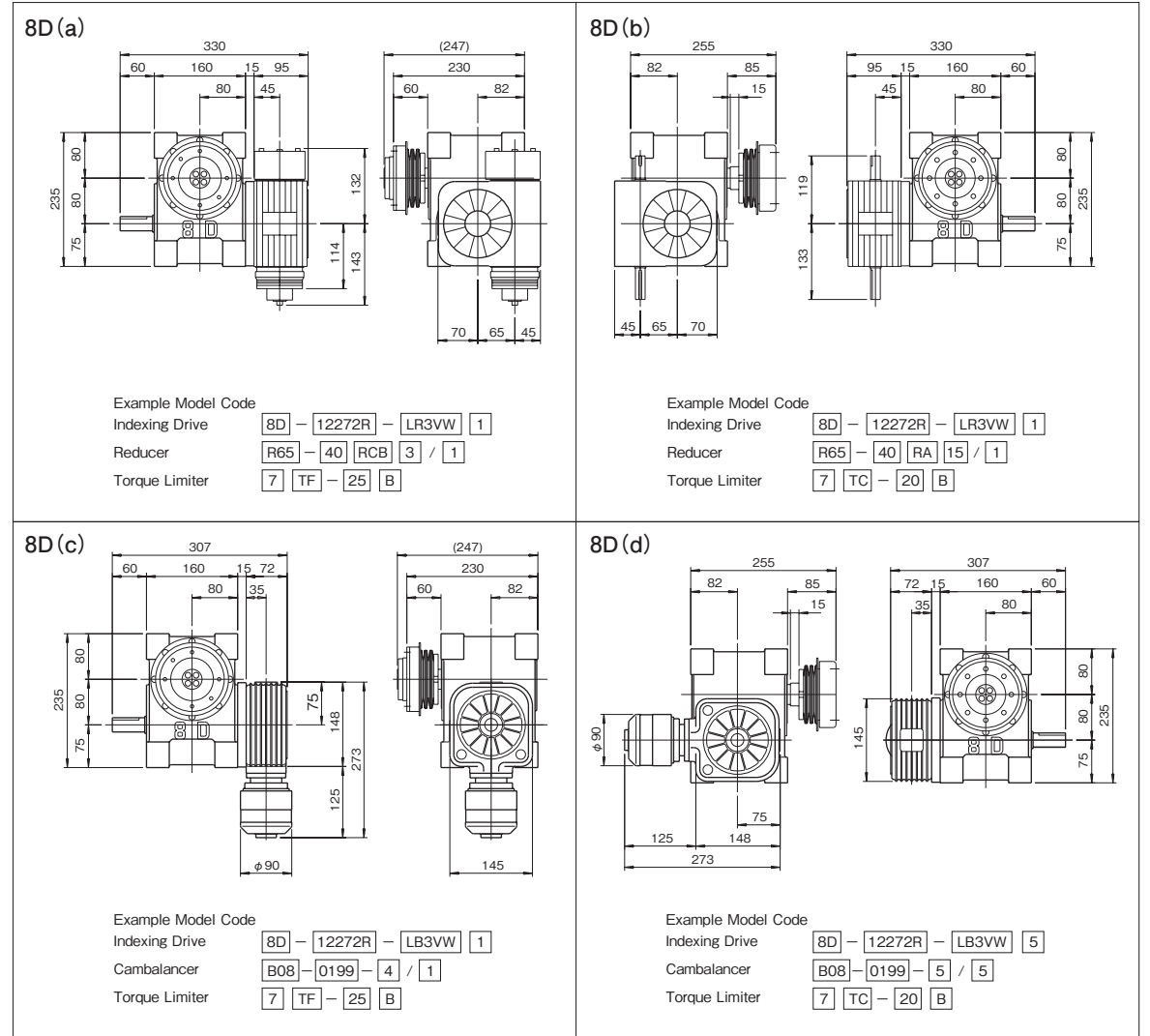
Table 8D-1

| Item | Symbol | Unit | Value | Item | Symbol | Unit | Value | Item | Symbol | Unit | Value |
|---------------------------------|----------------|-------------------|--------------------------------|--|----------------|-------------------|-----------------------|-----------------------------|--------|------|-------|
| Output allowable axial load | P ₁ | N | 2156 | Input allowable axial load | P ₄ | N | 2058 | Indexing accuracy (1 DWELL) | | sec | ±30 |
| Output allowable radial load | P ₂ | N | 2156 | Input maximum repetitious bending force | P ₅ | N | 1862 | Indexing accuracy (2 DWELL) | | sec | ±60 |
| Output static torque | T _s | N·m | Refer to Torque Capacity Table | Input maximum repetitious allowable torque | P ₆ | N·m | 181.3 | Indexing accuracy (3 DWELL) | | sec | ±90 |
| Output torsional rigidity | K ₁ | N·m/rad | 5.29×10 ⁴ | Input torsional rigidity | K ₂ | N·m/rad | 1.67×10 ⁴ | Indexing accuracy (4 DWELL) | | sec | ±120 |
| Output inertia | J ₀ | kg·m ² | 1.79×10 ⁻³ | Input inertia | J ₁ | kg·m ² | 2.25×10 ⁻³ | Repetitive accuracy | | sec | 15 |
| Output allowable bending moment | P ₃ | N·m | 63.7 | | | | | Product weight | | kg | 29 |
| | | | | | | | | Housing color | | Gray | |

Note : Input inertia : J is calculated in dwell.

(1N=0.102kgf)

Mounted accessories



Precautions

- Models 8D, 8E, and 8R can be equipped with reducer R65.
- The reducer can be mounted in 16 different positions as shown on page of Reducer.
- Models 8D, 8E, and 8R can be equipped with torque limiters 7TF, 8TF, 7TC and 8TC.
- Torque limiter TC-types require a collar for mounting. Reducer R65 requires a collar for mounting.

11D/11E/11R Dimensions

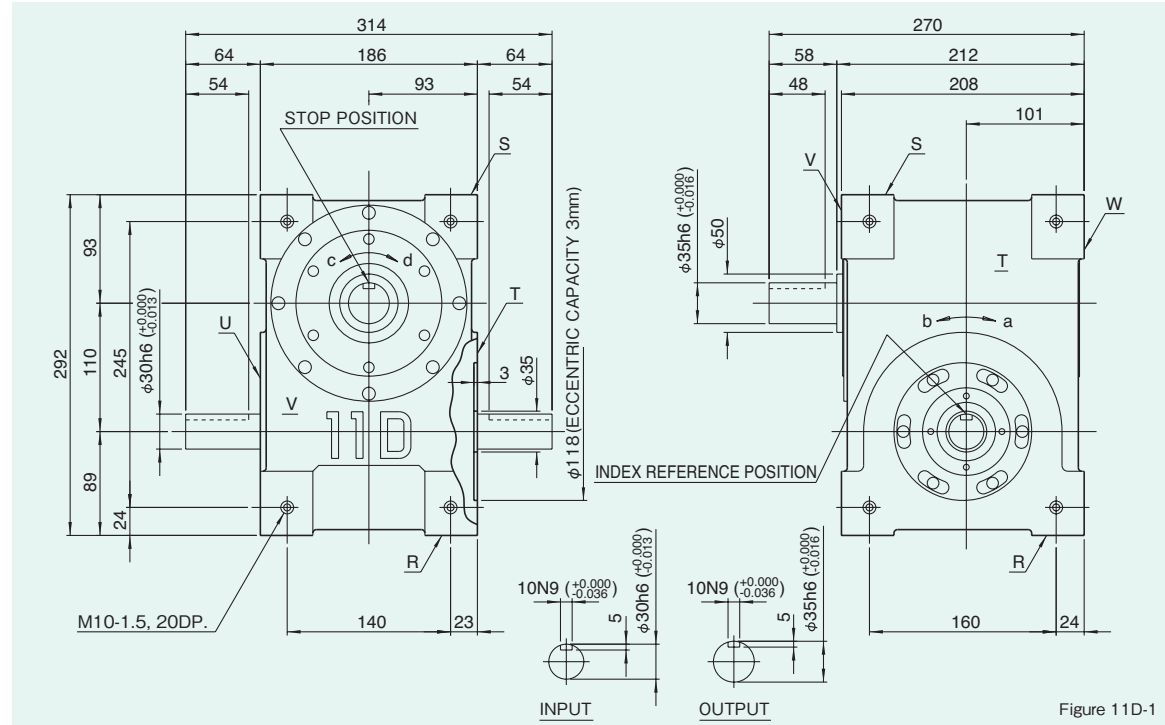
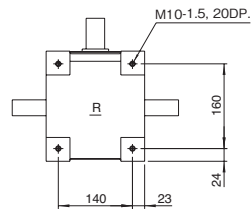


Figure 11D-1

Mounting hole locations

Figure 11D-2



Dimension of R and S surface

Locations of oil plug, etc., and oil capacity

Figure 11D-3

| Mounting position | 1 | 2 | 3 | 4 | 5 | 6 |
|-------------------|-----|-----|-----|-----|-----|-----|
| Location | | | | | | |
| Oil capacity (ℓ) | 2.0 | 1.4 | 0.9 | 0.9 | 1.2 | 1.3 |

Precautions

- Each point indicated in the mounting positions shown in Figure 11D-3 represents (starting at top) the oil plug (PT1/2), oil level (VA), and drain (PT1/2).
- The mounting positions correspond to code i for the indexing, oscillating, and rotary drives.
- The oil levels indicated in Figure 11D-3 are given in general figures and will differ according to the profile of the cam and the number of cam followers.

Specifications

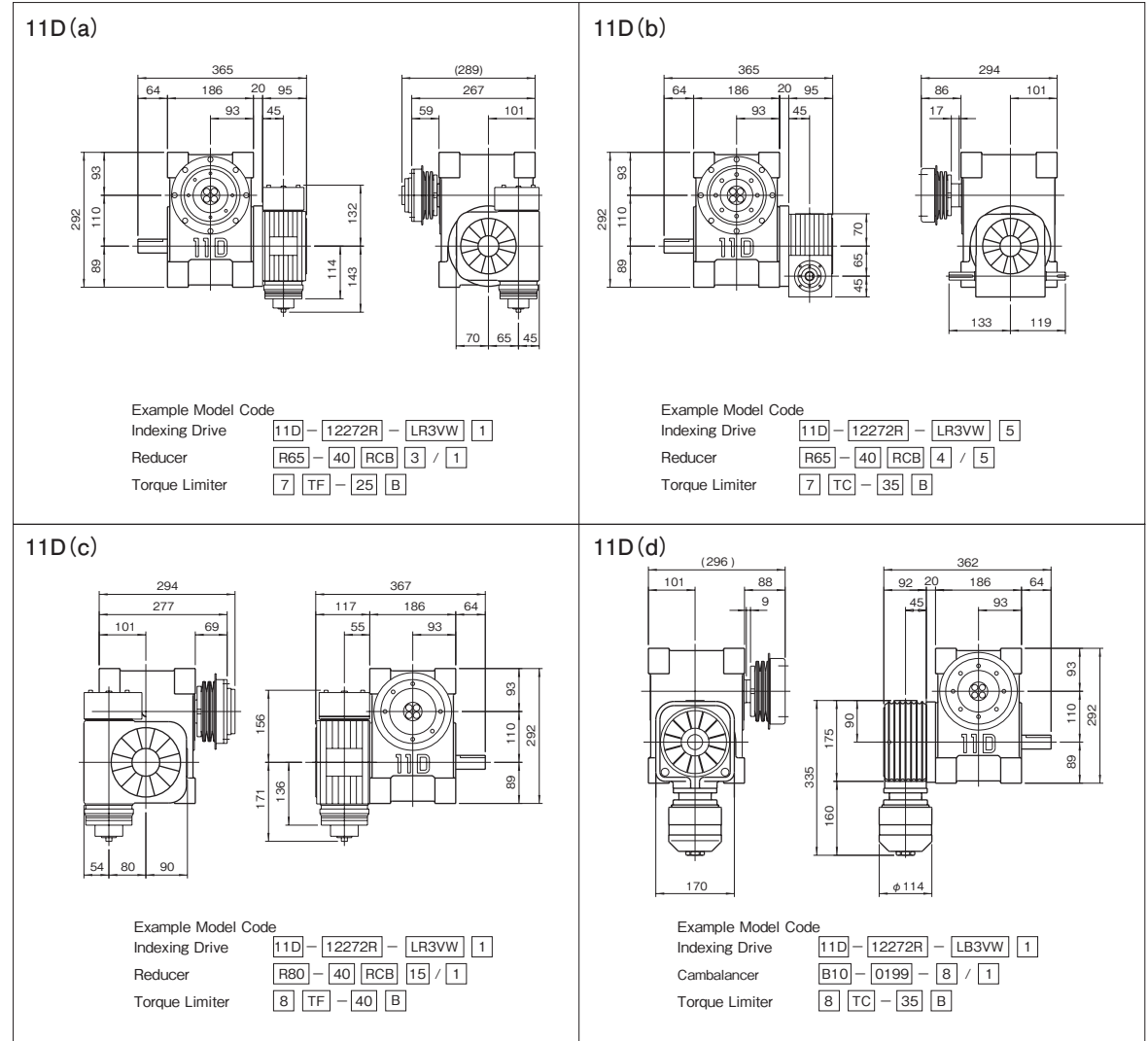
Table 11D-1

| Item | Symbol | Unit | Value | Item | Symbol | Unit | Value | Item | Symbol | Unit | Value |
|---------------------------------|----------------|-------------------|--------------------------------|--|----------------|-------------------|----------------------|-----------------------------|--------|------|-------|
| Output allowable axial load | P ₁ | N | 4900 | Input allowable axial load | P ₄ | N | 3528 | Indexing accuracy (1 DWELL) | | sec | ±30 |
| Output allowable radial load | P ₂ | N | 5390 | Input maximum repetitious bending force | P ₅ | N | 2842 | Indexing accuracy (2 DWELL) | | sec | ±60 |
| Output static torque | T _s | N·m | Refer to Torque Capacity Table | Input maximum repetitious allowable torque | P ₆ | N·m | 313.6 | Indexing accuracy (3 DWELL) | | sec | ±90 |
| Output torsional rigidity | K ₁ | N·m/rad | 8.82×10 ⁴ | Input torsional rigidity | K ₂ | N·m/rad | 3.04×10 ⁴ | Indexing accuracy (4 DWELL) | | sec | ±120 |
| Output inertia | J ₀ | kg·m ² | 9.05×10 ⁻³ | Input inertia | J ₁ | kg·m ² | 7.0×10 ⁻³ | Repetitive accuracy | | sec | 15 |
| Output allowable bending moment | P ₃ | N·m | 166.6 | | | | | Product weight | | kg | 51 |
| | | | | | | | | Housing color | | | Gray |

Note : Input inertia : J is calculated in dwell.

(1N=0.102kgf)

Mounted accessories



Example Model Code
 Indexing Drive 11D - 12272R - LR3VW 1
 Reducer R65 - 40 RCB 3 / 1
 Torque Limiter 7 TF - 25 B

Example Model Code
 Indexing Drive 11D - 12272R - LR3VW 5
 Reducer R65 - 40 RCB 4 / 5
 Torque Limiter 7 TC - 35 B

Example Model Code
 Indexing Drive 11D - 12272R - LR3VW 1
 Reducer R80 - 40 RCB 15 / 1
 Torque Limiter 8 TF - 40 B

Example Model Code
 Indexing Drive 11D - 12272R - LB3VW 1
 Cambalancer B10 - 0199 - 8 / 1
 Torque Limiter 8 TC - 35 B

Precautions

- Models 11D, 11E, and 11R can be equipped with reducers R65 and R80.
- The reducer can be mounted in 16 different positions as shown on page of Reducer.
- Models 11D, 11E, and 11R can be equipped with torque limiters 7TF, 8TF, 11TF, 7TC, 8TC and 11TC.
- Torque limiter TC-types require a collar for mounting. Reducer R65 requires a collar for mounting.

14D/14E/14R Dimensions

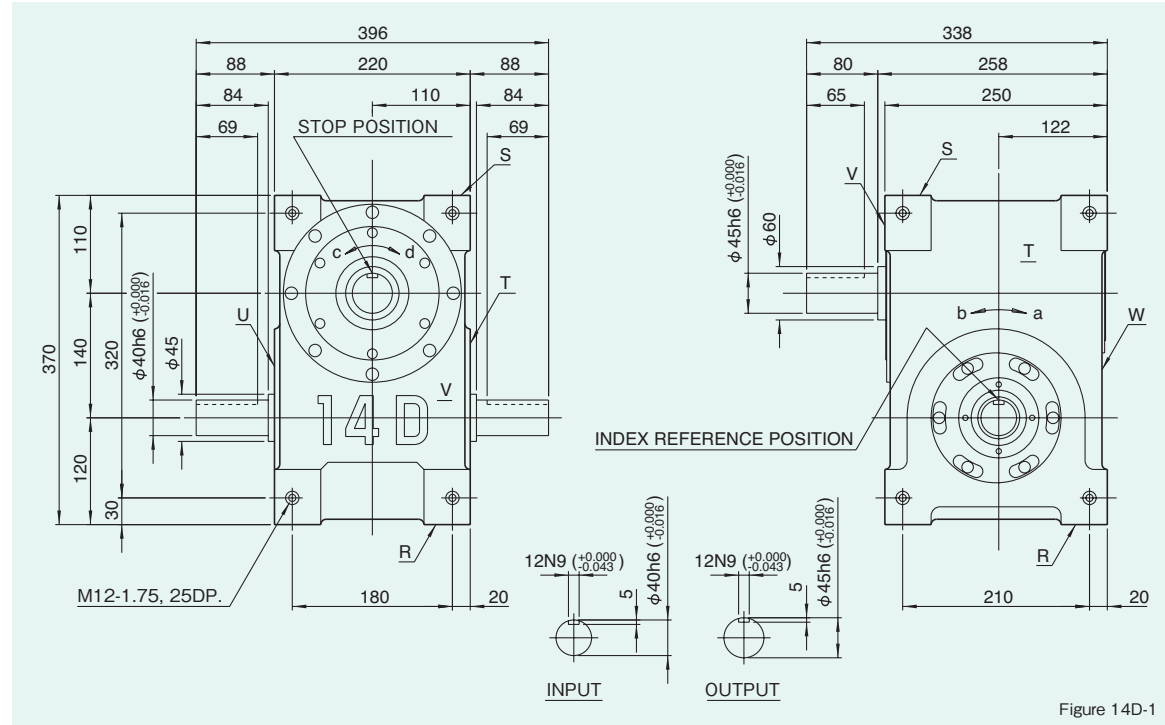
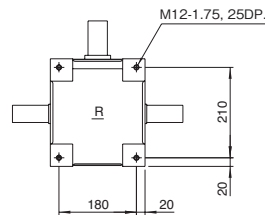


Figure 14D-1

Mounting hole locations



Dimension of R and S surface

Locations of oil plug, etc., and oil capacity

| Mounting position | 1 | 2 | 3 | 4 | 5 | 6 |
|-------------------|-----|-----|-----|-----|-----|-----|
| Location | | | | | | |
| Oil capacity (ℓ) | 4.3 | 4.3 | 4.1 | 4.1 | 2.7 | 5.1 |

Precautions

- Each point indicated in the mounting positions shown in Figure 14D-3 represents (starting at top) the oil plug (PT1/2), oil level (VA), and drain (PT1/2).
- The mounting positions correspond to code i for the indexing, oscillating, and rotary drives.
- The oil levels indicated in Figure 14D-3 are given in general figures and will differ according to the profile of the cam and the number of cam followers.

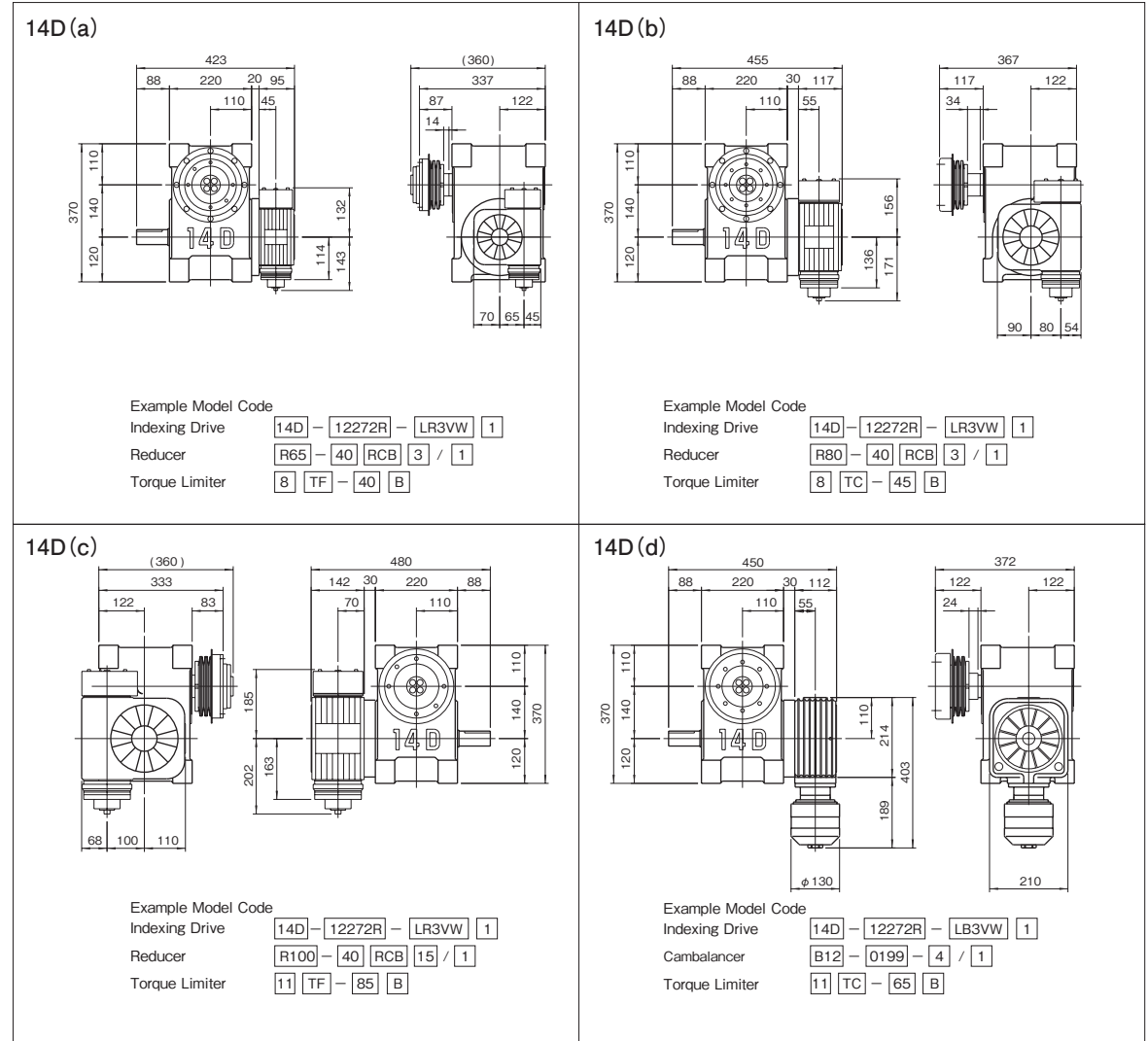
Specifications

| Item | Symbol | Unit | Value | Item | Symbol | Unit | Value | Item | Symbol | Unit | Value |
|---------------------------------|----------------|-------------------|--------------------------------|---|----------------|-------------------|-----------------------|-----------------------------|--------|------|-------|
| Output allowable axial load | P ₁ | N | 7154 | Input allowable axial load | P ₄ | N | 4312 | Indexing accuracy (1 DWELL) | | sec | ±30 |
| Output allowable radial load | P ₂ | N | 8428 | Input maximum repetitive bending force | P ₅ | N | 5488 | Indexing accuracy (2 DWELL) | | sec | ±60 |
| Output static torque | T _s | N·m | Refer to Torque Capacity Table | Input maximum repetitive allowable torque | P ₆ | N·m | 735 | Indexing accuracy (3 DWELL) | | sec | ±90 |
| Output torsional rigidity | K ₁ | N·m/rad | 1.86×10 ⁵ | Input torsional rigidity | K ₂ | N·m/rad | 7.84×10 ⁴ | Indexing accuracy (4 DWELL) | | sec | ±120 |
| Output inertia | J ₀ | kg·m ² | 2.63×10 ⁻² | Input inertia | J ₁ | kg·m ² | 2.75×10 ⁻² | Repetitive accuracy | | sec | 15 |
| Output allowable bending moment | P ₃ | N·m | 313.6 | | | | | Product weight | | kg | 120 |
| | | | | | | | | Housing color | | | Gray |

Note : Input inertia : J is calculated in dwell.

(1N=0.102kgf)

Mounted accessories



Precautions

- Models 14D, 14E, and 14R can be equipped with reducers R65, R80 and R100.
- The reducer can be mounted in 16 different positions as shown on page of Reducer.
- Models 14D, 14E, and 14R can be equipped with torque limiters 8TF, 11TF, 14TF, 8TC, 11TC and 14TC.
- Torque limiter TC-types require a collar for mounting. Reducers require a collar for mounting.

17D/17E/17R Dimensions

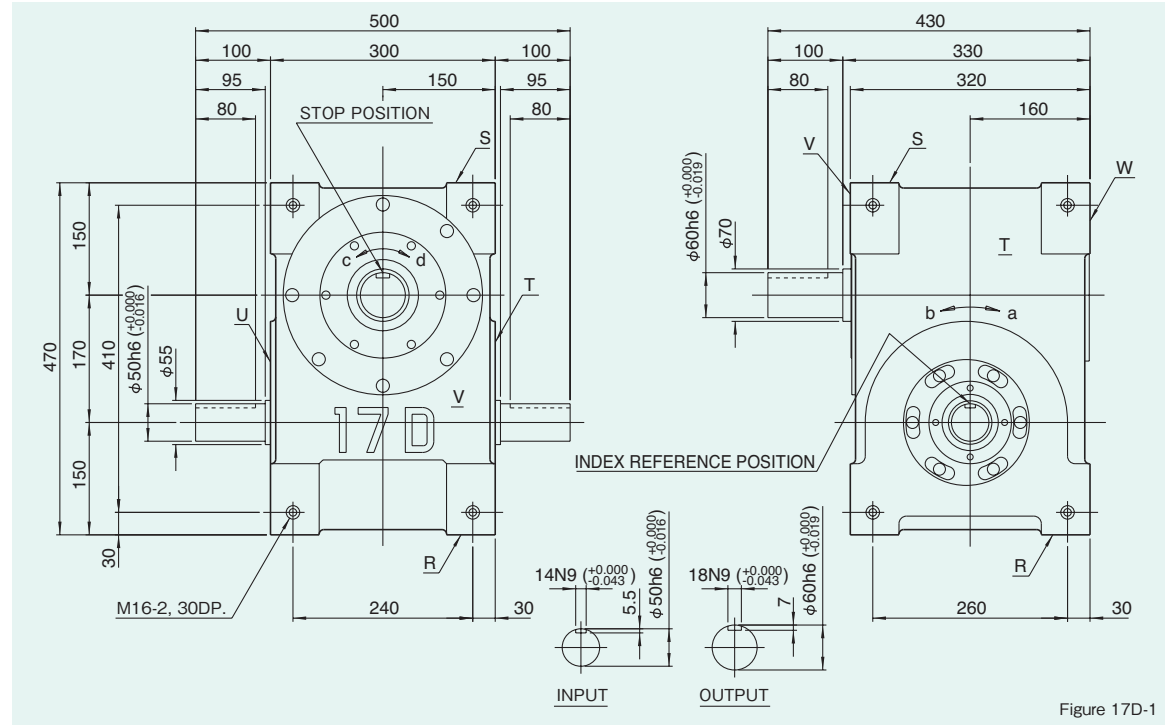
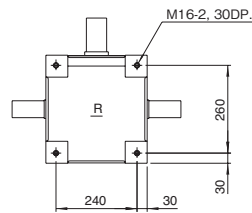


Figure 17D-1

Mounting hole locations

Figure 17D-2



Dimension of R and S surface

Locations of oil plug, etc., and oil capacity

Figure 17D-3

| Mounting position | 1 | 2 | 3 | 4 | 5 | 6 |
|-------------------|----|---|---|---|---|---|
| Location | | | | | | |
| Oil capacity (ℓ) | 10 | 9 | 9 | 9 | 4 | 7 |

Precautions

- Each point indicated in the mounting positions shown in Figure 17D-3 represents (starting at top) the oil plug (PT3/4), oil level (VB), and drain (PT3/4).
- The mounting positions correspond to code i for the indexing, oscillating, and rotary drives.
- The oil levels indicated in Figure 17D-3 are given in general figures and will differ according to the profile of the cam and the number of cam followers.

Specifications

Table 17D-1

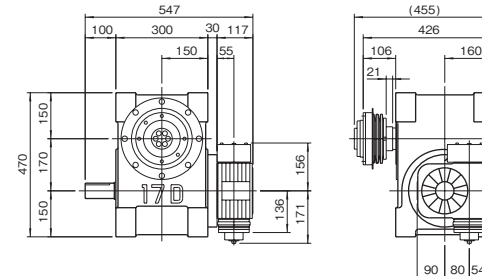
| Item | Symbol | Unit | Value | Item | Symbol | Unit | Value | Item | Symbol | Unit | Value |
|---------------------------------|----------------|-------------------|--------------------------------|---|----------------|-------------------|-----------------------|-----------------------------|--------|------|-------|
| Output allowable axial load | P ₁ | N | 8134 | Input allowable axial load | P ₄ | N | 5782 | Indexing accuracy (1 DWELL) | | sec | ±30 |
| Output allowable radial load | P ₂ | N | 9604 | Input maximum repetitive bending force | P ₅ | N | 9800 | Indexing accuracy (2 DWELL) | | sec | ±60 |
| Output static torque | T _s | N·m | Refer to Torque Capacity Table | Input maximum repetitive allowable torque | P ₆ | N·m | 1421 | Indexing accuracy (3 DWELL) | | sec | ±90 |
| Output torsional rigidity | K ₁ | N·m/rad | 4.02×10 ⁵ | Input torsional rigidity | K ₂ | N·m/rad | 1.37×10 ⁵ | Indexing accuracy (4 DWELL) | | sec | ±120 |
| Output inertia | J _o | kg·m ² | 6.25×10 ⁻² | Input inertia | J ₁ | kg·m ² | 7.25×10 ⁻² | Repetitive accuracy | | sec | 15 |
| Output allowable bending moment | P ₃ | N·m | 392 | | | | | Product weight | | kg | 200 |
| | | | | | | | | Housing color | | | Gray |

Note : Input inertia : J is calculated in dwell.

(1N=0.102kgf)

Mounted accessories

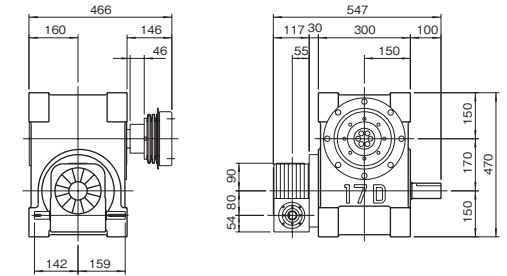
17D (a)



Example Model Code

Indexing Drive: 17D - 12272R - LR3VV 1
 Reducer: R80 - 40 RCB 3 / 1
 Torque Limiter: 11 TF - 120 B

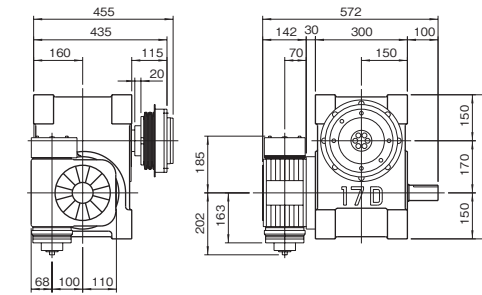
17D (b)



Example Model Code

Indexing Drive: 17D - 12272R - LR3VV 5
 Reducer: R80 - 40 RA 14 / 5
 Torque Limiter: 11 TC - 100 B

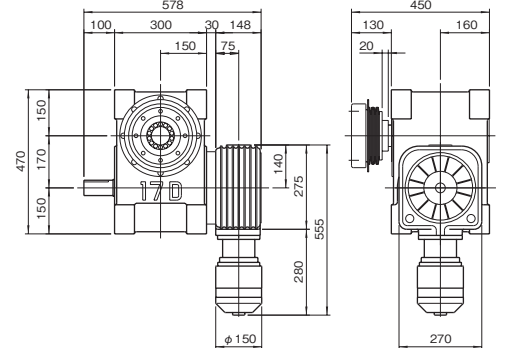
17D (c)



Example Model Code

Indexing Drive: 17D - 12272R - LR3VV 1
 Reducer: R100 - 40 RCB 15 / 1
 Torque Limiter: 14 TF - 120 B

17D (d)



Example Model Code

Indexing Drive: 17D - 12272R - LB3VV 1
 Cambalancer: B16 - 0199 - 4 / 1
 Torque Limiter: 14 TC - 130 B

Precautions

- Models 17D, 17E, and 17R can be equipped with reducers R80 and R100.
- The reducer can be mounted in 16 different positions as shown on page of Reducer.
- Models 17D, 17E, and 17R can be equipped with torque limiters 11TF, 14TF, 11TC and 14TC.
- Torque limiter TF-types require a collar for mounting.
- Torque limiter TC-types require a collar for mounting.

18D/18R Dimensions

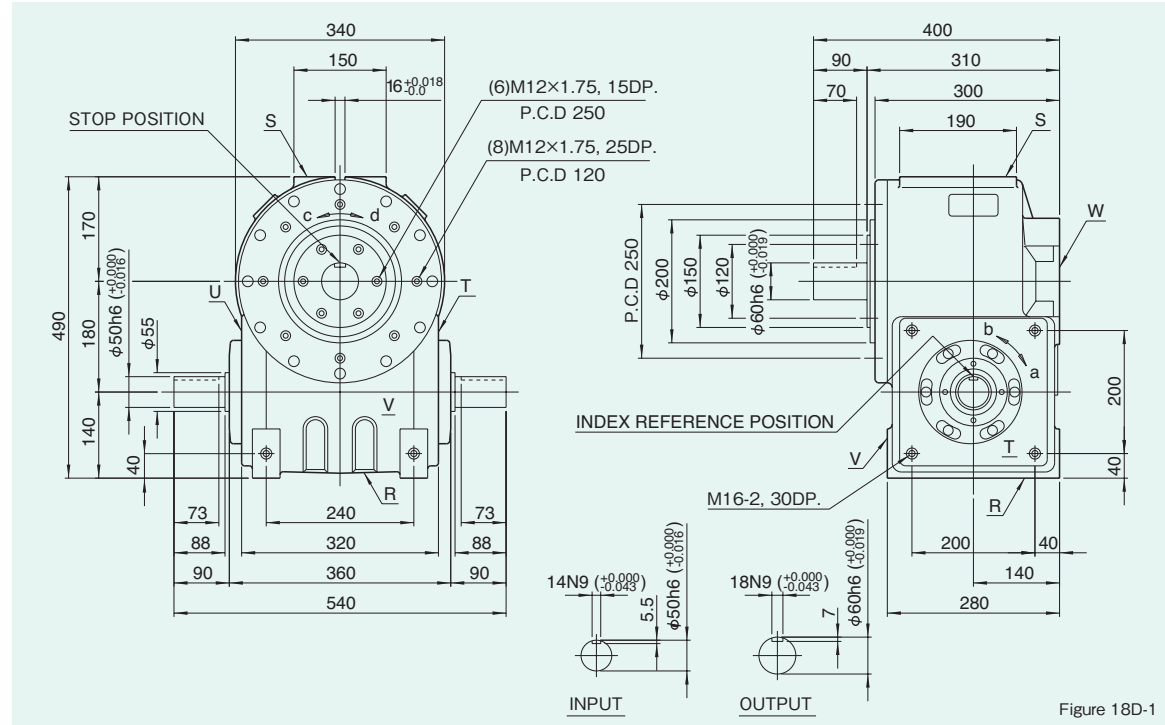
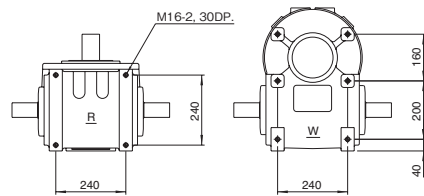


Figure 18D-1

Mounting hole locations

Figure 18D-2



Dimension of R and W surface

Locations of oil plug, etc., and oil capacity

Figure 18D-3

| Mounting position | 1 | 5 |
|-------------------|-----|-----|
| Location | | |
| Oil capacity (ℓ) | 8.7 | 5.0 |

Precautions

- Each point indicated in the mounting positions shown in Figure 18D-3 represents (starting at top) the oil plug (PT3/4), oil level (VB), and drain (PT3/4).
- The mounting positions correspond to code i for the indexing, oscillating, and rotary drives.
- The oil levels indicated in Figure 18D-3 are given in general figures and will differ according to the profile of the cam and the number of cam followers.

Specifications

Table 18D-1

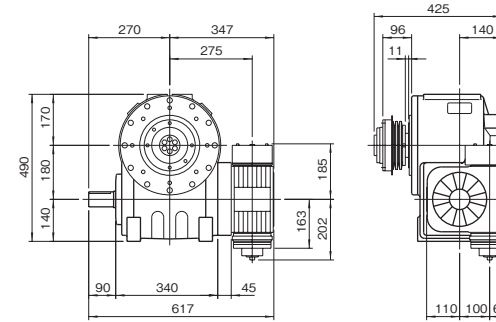
| Item | Symbol | Unit | Value | Item | Symbol | Unit | Value | Item | Symbol | Unit | Value |
|---------------------------------|----------------|-------------------|---------------------|--|----------------|-------------------|-----------------------|-----------------------------|--------|------|-------|
| Output allowable axial load | P ₁ | N | 11760 | Input allowable axial load | P ₄ | N | 5782 | Indexing accuracy (1 DWELL) | | sec | ±30 |
| Output allowable radial load | P ₂ | N | 14700 | Input maximum repetitious bending force | P ₅ | N | 10241 | Indexing accuracy (2 DWELL) | | sec | ±60 |
| Output static torque | T _s | N·m | | Input maximum repetitious allowable torque | P ₆ | N·m | 1441 | Indexing accuracy (3 DWELL) | | sec | ±90 |
| Output torsional rigidity | K ₁ | N·m/rad | 4.9×10 ⁵ | Input torsional rigidity | K ₂ | N·m/rad | 1.37×10 ⁵ | Indexing accuracy (4 DWELL) | | sec | ±120 |
| Output inertia | J ₀ | kg·m ² | 0.195 | Input inertia | J ₁ | kg·m ² | 9.75×10 ⁻² | Repetitive accuracy | | sec | 15 |
| Output allowable bending moment | P ₃ | N·m | 931 | | | | | Product weight | | kg | 220 |
| | | | | | | | | Housing color | | | Gray |

Note : Input inertia : J is calculated in dwell.

(1N=0.102kgf)

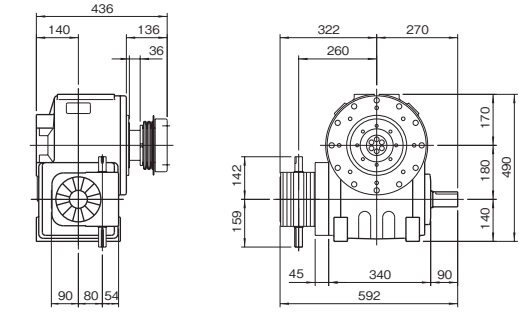
Mounted accessories

18D (a)



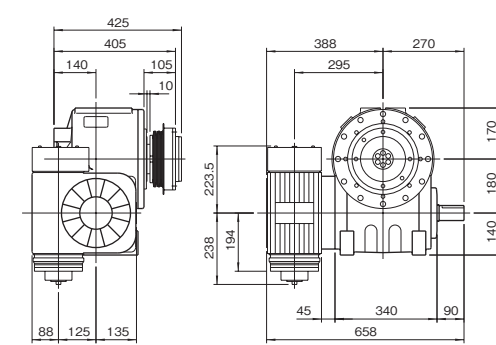
Example Model Code
 Indexing Drive 18D - 12272R - LR3VW 1
 Reducer R100 - 40 RCB 3 / 1
 Torque Limiter 11 TF - 120 B

18D (b)



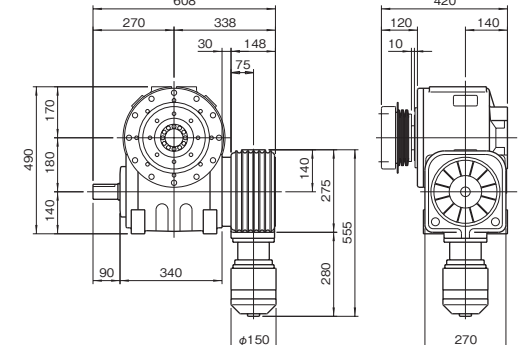
Example Model Code
 Indexing Drive 18D - 12272R - LR3VW 1
 Reducer R80 - 40 RA 9 / 1
 Torque Limiter 11 TC - 100 B

18D (c)



Example Model Code
 Indexing Drive 18D - 12272R - LR3VW 1
 Reducer R125 - 40 RA 15 / 1
 Torque Limiter 14 TF - 180 B

18D (d)



Example Model Code
 Indexing Drive 18D - 12272R - LB3VW 1
 Cambalancer B16 - 0199 4 / 1
 Torque Limiter 14 TC - 200 B

Precautions

- Models 18D and 18R can be equipped with reducers R80, R100 and R125.
- The reducer can be mounted in 16 different positions as shown on page of Reducer.
- Models 18D and 18R can be equipped with torque limiters 11TF, 14TF, 18TF, 11TC, 14TC and 18TC.
- Torque limiter TF-types require a collar for mounting.
- Torque limiter TC-types require a collar for mounting.